

Phospho-Crk p38 (Y221) Rabbit mAb

货号: **AYM29439**

产品信息

反应	Human
宿主	Rabbit
克隆性	Monoclonal
预测反应	
应用	WB ICC
推荐浓度	WB: 1:500 - 1:2000 ICC: 1:50 - 1:200
理论分子量	34kDa
实测分子量	34kDa
形式	Liquid
保存条件	Store at -20°C. Avoid freeze / thaw cycles. Buffer: PBS with 0.75% BSA,50% glycerol,pH7.3.
偶联物	Unconjugated
阳性对照	NIH/3T3,C6
细胞定位	Cell membrane,Cytoplasm
纯化	Affinity purification

抗原信息

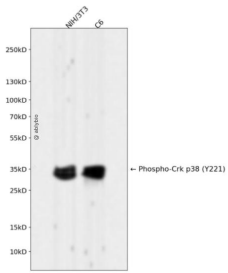
抗原信息	Recombinant fusion protein corresponding to Human Phospho-Crk p38 (Y221).
序列	GPYAQ

靶点信息

研究背景	This gene encodes a member of an adapter protein family that binds to several tyrosine-phosphorylated p roteins. The product of this gene has several SH2 and SH3 domains (src-homology domains) and is involv ed in several signaling pathways, recruiting cytoplasmic proteins in the vicinity of tyrosine kinase through SH2-phosphotyrosine interaction. The N-terminal SH2 domain of this protein functions as a positive regul ator of transformation whereas the C-terminal SH3 domain functions as a negative regulator of transform ation. Two alternative transcripts encoding different isoforms with distinct biological activity have been d escribed. [provided by RefSeq, Jul 2008]
------	--

基因ID	1398
基因名	CRK
Swiss	P46108
别名	CRKII; p38

产品验证



Western blot analysis of Phospho-Crk p38 (Y221) expressed in NIH/3T3, C6 using Phospho-Crk p38 (Y221) Rabbit mAb at 1:1000. Secondary antibody: HRP Goat Anti-Rabbit IgG (H+L) at 1:5000. Lysates/proteins: 30ug per lane. Blocking buffer: 5% non-fat dry milk in TBST. Detection: ECL Enhanced Kit. Exposure time: 120s.

实验步骤

访问官网浏览详情: www.ablybio.cn