

# GLP1 Rabbit mAb

货号: **AYM29432**

## 产品信息

|       |   |
|-------|---|
| 反应    | Human   |
| 宿主    | Rabbit  |
| 克隆性   | Monoclonal  |
| 预测反应  |   |
| 应用    | WB IHC IF/ICC   |
| 推荐浓度  | <b>WB:</b> 1:500 - 1:2000<br><b>IHC:</b> 1:50 - 1:200<br><b>IF/ICC:</b> 1:50 - 1:200          |
| 理论分子量 | 11kDa   |
| 实测分子量 | 11kDa   |
| 形式    | Liquid  |
| 保存条件  | Store at -20°C. Avoid freeze / thaw cycles.<br>Buffer: PBS with 0.75% BSA,50% glycerol,pH7.3. |
| 偶联物   | Unconjugated  |
| 阳性对照  | 293F(Negative control),Rat pancreas   |
| 细胞定位  | Secreted  |
| 纯化    | Affinity purification   |

## 抗原信息

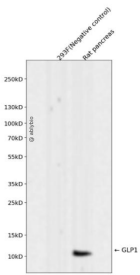
|      |   |
|------|---|
| 抗原信息 | Recombinant fusion protein corresponding to Human GLP1. |
| 序列   |   |

## 靶点信息

|      |  |
|------|--|
| 研究背景 | The protein encoded by this gene is actually a preproprotein that is cleaved into four distinct mature peptides. One of these, glucagon, is a pancreatic hormone that counteracts the glucose-lowering action of insulin by stimulating glycogenolysis and gluconeogenesis. Glucagon is a ligand for a specific G-protein linked receptor whose signalling pathway controls cell proliferation. Two of the other peptides are secreted from gut endocrine cells and promote nutrient absorption through distinct mechanisms. Finally, the fourth peptide is similar to glicentin, an active enteroglucagon. [provided by RefSeq, Jul 2008] |
|------|--|

|       |                         |
|-------|-------------------------|
| 基因ID  | 2641                    |
| 基因名   | GCG                     |
| Swiss | P01275                  |
| 别名    | GLP-1; GLP1; GLP2; GRPP |

## 产品验证



Western blot analysis of GLP1 expressed in 293F(Negative control),Rat pancreas using GLP1 Rabbit mAb at 1:1000. Secondary antibody: HRP Goat Anti-Rabbit IgG (H+L) at 1:5000. Lysates/proteins: 30ug per lane . Blocking buffer: 5% non-fat dry milk in TBST. Detection: ECL Enhanced Kit. Exposure time: 120s.

## 实验步骤

访问官网浏览详情: [www.ablybio.cn](http://www.ablybio.cn)