

# p60 CAF1 Rabbit mAb

货号: AYM29425

## 产品信息

反应	Human
宿主	Rabbit
克隆性	Monoclonal
预测反应	
应用	WB IHC IF/ICC IP FC
推荐浓度	<b>WB:</b> 1:500 - 1:2000 <b>IHC:</b> 1:50 - 1:200 <b>IF/ICC:</b> 1:50 - 1:200 <b>IP:</b> 1:20 - 1:50 <b>FC:</b> 1:20 - 1:50
理论分子量	61kDa
实测分子量	70kDa
形式	Liquid
保存条件	Store at -20°C. Avoid freeze / thaw cycles. Buffer: PBS with 0.75% BSA,50% glycerol,pH7.3.
偶联物	Unconjugated
阳性对照	HeLa,293T,MCF7,U-251MG
细胞定位	Cytoplasm,Nucleus
纯化	Affinity purification

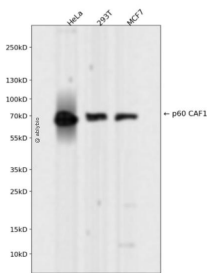
## 抗原信息

抗原信息	Recombinant fusion protein corresponding to Human p60 CAF1.
序列	SRKNLKRPIAHLPCPGKATLAVRCCPVYFELRPVVETGVELMSLPYRLVFAVASEDSVLLYDTQQSFPGYVSNIIHYHTLSDI SWSSDGAFLAISSTDGYCSFVTFEKDELGIPLKEKPVLMRTPDTAKKTKSQTHRGSPPGPRPVEGTPASRTQDPSSPGTT PPQARQAPAPTVIDPPSITPAVKSPPLPGPSEEKTLQPSSQNTKAHPSRRVTLNLTQAWSKTTPRRINLTPLKTDTPSSVPT SVISTPSTEEIQSETPGDAQGSPPELKRPRLDENKGGTESLDP

## 靶点信息

研究背景	Chromatin assembly factor I (CAF-I) is required for the assembly of histone octamers onto newly-replicated DNA. CAF-I is composed of three protein subunits, p50, p60, and p150. The protein encoded by this gene corresponds to the p60 subunit and is required for chromatin assembly after replication. The encoded protein is differentially phosphorylated in a cell cycle-dependent manner. In addition, it is normally found in the nucleus except during mitosis, when it is released into the cytoplasm. This protein is a member of the WD-repeat HIR1 family and may also be involved in DNA repair.
基因ID	8208
基因名	CHAF1B
Swiss	Q13112
别名	CHAF1B;CAF-1;CAF-IP60;CAF1;CAF1A;CAF1P60;MPHOSPH7;MPP7

## 产品验证



Western blot analysis of p60 CAF1 expressed in HeLa,293T,MCF7 using p60 CAF1 Rabbit mAb at 1:1000. Secondary antibody: HRP Goat Anti-Rabbit IgG (H+L) at 1:5000. Lysates/proteins: 30ug per lane. Blocking buffer: 5% non-fat dry milk in TBST. Detection: ECL Enhanced Kit. Exposure time: 120s.

## 实验步骤

访问官网浏览详情: [www.ablybio.cn](http://www.ablybio.cn)