

Estrogen Related Receptor alpha Rabbit mAb

货号: **AYM29423**

产品信息

| | |
|-------|---|
| 反应 | Human,Mouse,Rat |
| 宿主 | Rabbit |
| 克隆性 | Monoclonal |
| 预测反应 | |
| 应用 | WB IP FC |
| 推荐浓度 | WB: 1:500 - 1:2000 IP: 1:20 - 1:50 FC: 1:20 - 1:50 |
| 理论分子量 | 45kDa |
| 实测分子量 | 55kDa |
| 形式 | Liquid |
| 保存条件 | Store at -20°C. Avoid freeze / thaw cycles. Buffer: PBS with 0.75% BSA,50% glycerol,pH7.3. |
| 偶联物 | Unconjugated |
| 阳性对照 | 293T,Mouse kidney,Mouse heart,Rat heart |
| 细胞定位 | Nucleus |
| 纯化 | Affinity purification |

抗原信息

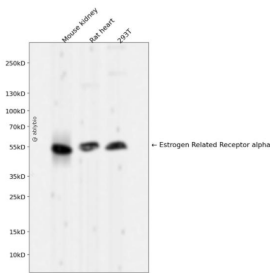
| | |
|------|--|
| 抗原信息 | Recombinant fusion protein corresponding to Human Estrogen Related Receptor alpha. |
| 序列 | MSSQVVGIEPLYIKAEPASPDSPKGSSETETEPVALAPGPAPTRCLPGHKEEEDGEGAGPGEQGGGKLVLSLSPK |

靶点信息

| | |
|------|--|
| 研究背景 | The protein encoded by this gene is a nuclear receptor that is closely related to the estrogen receptor. Th is protein acts as a site-specific transcription regulator and has been also shown to interact with estrogen and the transcripion factor TFIIIB by direct protein-protein contact. The binding and regulatory activities o f this protein have been demonstrated in the regulation of a variety of genes including lactoferrin, osteop ontin, medium-chain acyl coenzyme A dehydrogenase (MCAD) and thyroid hormone receptor genes. A pr ocessed pseudogene of ESRRA is located on chromosome 13q12.1. Alternatively spliced transcript variant s have been found for this gene. |
|------|--|

| | |
|-------|--------------------------------------|
| 基因ID | 2101 |
| 基因名 | ESRRA |
| Swiss | P11474 |
| 别名 | ESRRA;ERR1;ERRa;ERRalpha;ESRL1;NR3B1 |

产品验证



Western blot analysis of Estrogen Related Receptor alpha expressed in Mouse kidney,Rat heart, 293T using Estrogen Related Receptor alpha Rabbit mAb at 1:1000. Secondary antibody: HRP Goat Anti-Rabbit IgG (H+L) at 1:5000. Lysates/proteins: 30ug per lane. Blocking buffer: 5% non-fat dry milk in TBST. Detection: ECL Enhanced Kit. Exposure time: 120s.

实验步骤

访问官网浏览详情: www.ablybio.cn