

# HAPLN1 Rabbit mAb

货号: **AYM29419**

## 产品信息

反应	Human,Mouse,Rat
宿主	Rabbit
克隆性	Monoclonal
预测反应	
应用	WB IHC IF/ICC
推荐浓度	<b>WB:</b> 1:500 - 1:2000 <b>IHC:</b> 1:50 - 1:200 <b>IF/ICC:</b> 1:50 - 1:200
理论分子量	40kDa
实测分子量	48kDa
形式	Liquid
保存条件	Store at -20°C. Avoid freeze / thaw cycles. Buffer: PBS with 0.75% BSA,50% glycerol,pH7.3.
偶联物	Unconjugated
阳性对照	HeLa,A375,Mouse liver
细胞定位	Secreted,extracellular matrix,extracellular space
纯化	Affinity purification

## 抗原信息

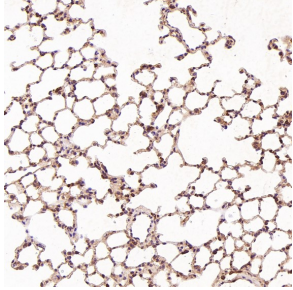
抗原信息	Recombinant fusion protein corresponding to Human HAPLN1 .
序列	PRLGRYNLNFHEAQQACLQDAVIASFDQLYDAWRGGLDWCNAGWLSDGSVQYPITKPREPCGGQNTVPGVRNYGFW DKDKSRYDVFCTSNFNFRFYLIHPTKLTIDEAVQACLNDGAQIAKVGQIFAAWKILGYDRCDAGWLADGSVRYPISRP RRRCSPTEAAVRFVGFDPDKKHKLYGVYCFRAYN

## 靶点信息

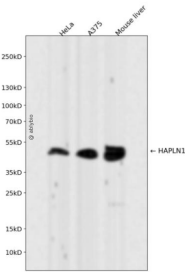
研究背景	Stabilizes the aggregates of proteoglycan monomers with hyaluronic acid in the extracellular cartilage matrix.
基因ID	1404

基因名	HAPLN1
Swiss	P10915
别名	HAPLN1;CRT1;CRTL1

## 产品验证



Immunohistochemical analysis of paraffin-embedded Rat liver, using the Antibody at 1:50 dilution.



Western blot analysis of HAPLN1 expressed in HeLa, A375, Mouse liver using HAPLN1 Rabbit mAb at 1:1000. Secondary antibody: HRP Goat Anti-Rabbit IgG (H+L) at 1:5000. Lysates/proteins: 30ug per lane. Blocking buffer: 5% non-fat dry milk in TBST. Detection: ECL Enhanced Kit. Exposure time: 120s.

## 实验步骤

访问官网浏览详情: [www.ablybio.cn](http://www.ablybio.cn)