

Rho A + B + C Rabbit mAb

货号: **AYM29409**

产品信息

| | |
|-------|--|
| 反应 | Human,Mouse,Rat |
| 宿主 | Rabbit |
| 克隆性 | Monoclonal |
| 预测反应 | |
| 应用 | WB IHC IF/ICC FC |
| 推荐浓度 | WB: 1:500 - 1:2000 IHC: 1:50 - 1:200 IF/ICC: 1:50 - 1:200 FC: 1:20 - 1:50 |
| 理论分子量 | |
| 实测分子量 | 22kDa |
| 形式 | Liquid |
| 保存条件 | Store at -20°C. Avoid freeze / thaw cycles. Buffer: PBS with 0.75% BSA,50% glycerol,pH7.3. |
| 偶联物 | Unconjugated |
| 阳性对照 | |
| 细胞定位 | |
| 纯化 | Affinity purification |

抗原信息

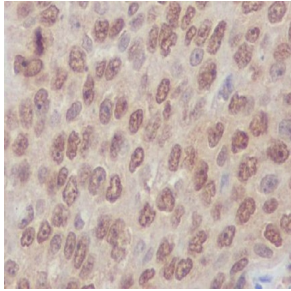
| | |
|------|---|
| 抗原信息 | Recombinant fusion protein corresponding to Human Rho A + B + C . |
| 序列 | |

靶点信息

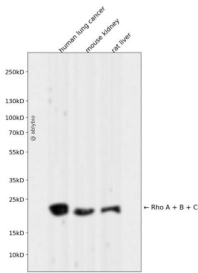
| | |
|------|--|
| 研究背景 | |
| 基因ID | |
| 基因名 | |

| | |
|-------|----------------------|
| Swiss | P61586/P62745/P08134 |
| 别名 | |

产品验证



Immunohistochemical analysis of paraffin-embedded human lung carcinoma, using Rho A + B + C Antibody .



Western blot analysis of Rho A + B + C expressed in human lung cancer, mouse kidney, rat liver using Rho A + B + C Rabbit mAb at 1:1000. Secondary antibody: HRP Goat Anti-Rabbit IgG (H+L) at 1:5000. Lysates/proteins: 30ug per lane. Blocking buffer: 5% non-fat dry milk in TBST. Detection: ECL Enhanced Kit. Exposure time: 120s.

实验步骤

访问官网浏览详情: www.ablybio.cn