

SPTA1 Rabbit mAb

货号: **AYM29405**

产品信息

反应	Human
宿主	Rabbit
克隆性	Monoclonal
预测反应	
应用	WB IHC
推荐浓度	WB: 1:500 - 1:2000 IHC: 1:50 - 1:200
理论分子量	279kDa/280kDa
实测分子量	280kDa
形式	Liquid
保存条件	Store at -20°C. Avoid freeze / thaw cycles. Buffer: PBS with 0.75% BSA,50% glycerol,pH7.3.
偶联物	Unconjugated
阳性对照	239T,LO2,A-549,Mouse kidney,Mouse liver,Mouse lung,Rat heart
细胞定位	Cytoplasm,cell cortex,cytoskeleton
纯化	Affinity purification

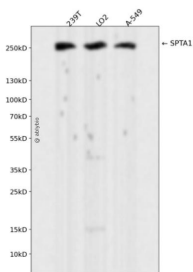
抗原信息

抗原信息	Recombinant fusion protein corresponding to Human SPTA1.
序列	KHEAFLLDLNSFGDSMKALRNQANACQQQQAAPVEGVAGEQRMALYDFQARSPREVTMKKGDVLTLLSSINKDWWK VEAADHQGIVPAVYVRRRLAHDEFMPLPQRRREEPGNITQRQEIQENQYRSLLDRAEERRRRLLQRYNEFLLAYEAGDMLEW IQEKKAENTGVELDDVWELQKKFDEFQKDLNTNEPRLRDINKVADDLLFEGLLTPEGAQIRQE

靶点信息

研究背景	Spectrin is an actin crosslinking and molecular scaffold protein that links the plasma membrane to the actin cytoskeleton, and functions in the determination of cell shape, arrangement of transmembrane proteins, and organization of organelles. It is a tetramer made up of alpha-beta dimers linked in a head-to-head arrangement. This gene is one member of a family of alpha-spectrin genes. The encoded protein is primarily composed of 22 spectrin repeats which are involved in dimer formation. It forms weaker tetramer interactions than non-erythrocytic alpha spectrin, which may increase the plasma membrane elasticity and deformability of red blood cells. Mutations in this gene result in a variety of hereditary red blood cell disorders, including elliptocytosis type 2, pyropoikilocytosis, and spherocytic hemolytic anemia.
基因ID	6708
基因名	SPTA1
Swiss	P02549
别名	SPTA1;EL2;HPP;HS3;SPH3;SPTA

产品验证



Western blot analysis of SPTA1 expressed in 239T, LO2, A-549 using SPTA1 Rabbit mAb at 1:1000. Secondary antibody: HRP Goat Anti-Rabbit IgG (H+L) at 1:5000. Lysates/proteins: 30ug per lane. Blocking buffer: 5% non-fat dry milk in TBST. Detection: ECL Enhanced Kit. Exposure time: 120s.

实验步骤

访问官网浏览详情: www.ablybio.cn