

Apg12(Atg12) Rabbit mAb

货号: **AYM29404**

产品信息

| | |
|-------|---|
| 反应 | Human |
| 宿主 | Rabbit |
| 克隆性 | Monoclonal |
| 预测反应 | |
| 应用 | WB IHC ICC IP FC |
| 推荐浓度 | WB: 1:500 - 1:2000 IHC: 1:50 - 1:200 ICC: 1:50 - 1:200 IP: 1:20 - 1:50 FC: 1:20 - 1:50 |
| 理论分子量 | 22,55kDa |
| 实测分子量 | 22,55kDa |
| 形式 | Liquid |
| 保存条件 | Store at -20°C. Avoid freeze / thaw cycles. Buffer: PBS with 0.75% BSA,50% glycerol,pH7.3. |
| 偶联物 | Unconjugated |
| 阳性对照 | PC-3,Mouse brain,Mouse stomach |
| 细胞定位 | Cytoplasm,Peripheral membrane protein,Preautophagosomal structure membrane |
| 纯化 | Affinity purification |

抗原信息

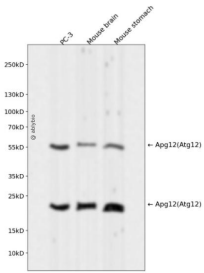
| | |
|------|--|
| 抗原信息 | Recombinant fusion protein corresponding to Human Apg12(Atg12). |
| 序列 | AVGDTPIMKTKKWAVERTRTIQGLIDFIKKFLKLVASEQLFIYVNQSFAPSPDQEVGTLYECFGSDGKLVLHYCKSQAWG |

靶点信息

| | |
|------|---|
| 研究背景 | Autophagy is a process of bulk protein degradation in which cytoplasmic components, including organelles, are enclosed in double-membrane structures called autophagosomes and delivered to lysosomes or vacuoles for degradation. ATG12 is the human homolog of a yeast protein involved in autophagy (Mizushima et al., 1998 [PubMed 9852036]).[supplied by OMIM, Mar 2008] |
|------|---|

| | |
|-------|---------------------------------------|
| 基因ID | 9140 |
| 基因名 | ATG12 |
| Swiss | O94817 |
| 别名 | ATG12;APG12;APG12L;FBR93;HAPG12;Apg12 |

产品验证



Western blot analysis of Apg12(Atg12) expressed in PC-3, Mouse brain, Mouse stomach using Apg12(Atg12) Rabbit mAb at 1:1000. Secondary antibody: HRP Goat Anti-Rabbit IgG (H+L) at 1:5000. Lysates/proteins: 30ug per lane. Blocking buffer: 5% non-fat dry milk in TBST. Detection: ECL Enhanced Kit. Exposure time: 120s.

实验步骤

访问官网浏览详情: www.ablybio.cn