

GluA4 Rabbit mAb

货号: **AYM29400**

产品信息

反应	Human,Mouse,Rat
宿主	Rabbit
克隆性	Monoclonal
预测反应	
应用	WB FC
推荐浓度	WB: 1:500 - 1:2000 FC: 1:20 - 1:50
理论分子量	49kDa/100kDa
实测分子量	101kDa
形式	Liquid
保存条件	Store at -20°C. Avoid freeze / thaw cycles. Buffer: PBS with 0.75% BSA,50% glycerol,pH7.3.
偶联物	Unconjugated
阳性对照	SH-SY5Y,B cells,Mouse brain,Mouse liver,Mouse kidney,Mouse spinal cord,Rat brain
细胞定位	Cell junction,Cell membrane,Cell projection,Multi-pass membrane protein,dendrite,postsynaptic cell membrane,synapse
纯化	Affinity purification

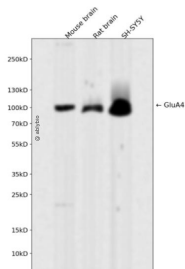
抗原信息

抗原信息	Recombinant fusion protein corresponding to Human GluA4.
序列	HGGANVTGFQLVDFNTPMVIKLMDRWKKLDQREYPGSETPPKYTSALTYDGLVMAETFRSLRRQKIDISRRGNAGDCLANPAAPWGQGIDMERTLKQVRIQGLTGNVQFDHYGRRVNYTMDVFELKSTGPRKVGWYNDMDKLVLIQDVPTLGNDTA AIENRTVVVTTIMPLMKNPILRN

靶点信息

研究背景	Glutamate receptors are the predominant excitatory neurotransmitter receptors in the mammalian brain and are activated in a variety of normal neurophysiologic processes. These receptors are heteromeric protein complexes composed of multiple subunits, arranged to form ligand-gated ion channels. The classification of glutamate receptors is based on their activation by different pharmacologic agonists. The subunit encoded by this gene belongs to a family of AMPA (alpha-amino-3-hydroxy-5-methyl-4-isoxazole propionate)-sensitive glutamate receptors, and is subject to RNA editing (AGA->GGA; R->G). Alternative splicing of this gene results in transcript variants encoding different isoforms, which may vary in their signal transduction properties. Some haplotypes of this gene show a positive association with schizophrenia.
基因ID	2893
基因名	GRIA4
Swiss	P48058
别名	GRIA4;GLUR4;GLUR4C;GLURD;GluA4

产品验证



Western blot analysis of GluA4 expressed in Mouse brain,Rat brain,SH-SY5Y using GluA4 Rabbit mAb at 1:1000. Secondary antibody: HRP Goat Anti-Rabbit IgG (H+L) at 1:5000. Lysates/proteins: 30ug per lane. Blocking buffer: 5% non-fat dry milk in TBST. Detection: ECL Enhanced Kit. Exposure time: 120s.

实验步骤

访问官网浏览详情: www.ablybio.cn