

FE65 Rabbit mAb

货号: **AYM29397**

产品信息

反应	Human
宿主	Rabbit
克隆性	Monoclonal
预测反应	
应用	WB IHC IF/ICC
推荐浓度	WB: 1:500 - 1:2000 IHC: 1:50 - 1:200 IF/ICC: 1:50 - 1:200
理论分子量	49kDa/52kDa/53kDa/54kDa/76kDa/77kDa
实测分子量	100kDa
形式	Liquid
保存条件	Store at -20°C. Avoid freeze / thaw cycles. Buffer: PBS with 0.75% BSA,50% glycerol,pH7.3.
偶联物	Unconjugated
阳性对照	Raji,Lovo,BT-474,A-549,Mouse brain,Mouse heart,Mouse lung,Mouse spinal cord
细胞定位	Cell membrane,Cell projection,Cytoplasm,Nucleus,Nucleus speckle,growth cone
纯化	Affinity purification

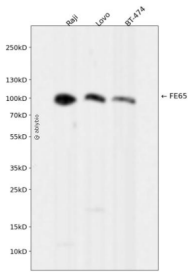
抗原信息

抗原信息	Recombinant fusion protein corresponding to Human FE65.
序列	PPRNTNPGIKCFAVRSLGWVEMTEEELAPGRSSVAVNNCIRQLSYHKNNLHDPMSGGWGEGKDLLLQLEDETLKLVPEQ SQALLHAQPIISIRVWGVGRDSDGRDFAYVARDKLTQMLKCHVFRCEAPAKNIATSLHEICSKIMAERRNARCLVNGLSLDHS KLVDVPFQVEFPAPKNELVQKFQVYYLGNVPVAKPVGVDVINGALESVLSSSSREQWTPSHVSVAPATLTILHQQTEAVLG ECRVRFLSFLAVGRDVHTFAFIMAAGPASFCCHMFWCEPNAASLSEAVQAACMLRYQKCLDARSQASTSCLPAPPAESVA RRVGWTVRRGVQSLWGSCLKPKRLGAHTP

靶点信息

研究背景	The protein encoded by this gene is a member of the Fe65 protein family. It is an adaptor protein localized in the nucleus. It interacts with the Alzheimer's disease amyloid precursor protein (APP), transcription factor CP2/LSF/LBP1 and the low-density lipoprotein receptor-related protein. APP functions as a cytosolic anchoring site that can prevent the gene product's nuclear translocation. This encoded protein could play an important role in the pathogenesis of Alzheimer's disease. It is thought to regulate transcription. Also it is observed to block cell cycle progression by downregulating thymidylate synthase expression. Multiple alternatively spliced transcript variants encoding different isoforms have been described for this gene.
基因ID	322
基因名	APBB1
Swiss	O00213
别名	APBB1;FE65;MGC:9072;RIR

产品验证



Western blot analysis of FE65 expressed in Raji, Lovo, BT-474 using FE65 Rabbit mAb at 1:1000. Secondary antibody: HRP Goat Anti-Rabbit IgG (H+L) at 1:5000. Lysates/proteins: 30ug per lane. Blocking buffer: 5% non-fat dry milk in TBST. Detection: ECL Enhanced Kit. Exposure time: 120s.

实验步骤

访问官网浏览详情: www.ablybio.cn