

# MMP11 Rabbit mAb

货号: **AYM29393**

## 产品信息

反应	Human,Mouse,Rat
宿主	Rabbit
克隆性	Monoclonal
预测反应	
应用	WB IHC IF/ICC
推荐浓度	<b>WB:</b> 1:500 - 1:2000 <b>IHC:</b> 1:50 - 1:200 <b>IF/ICC:</b> 1:50 - 1:200
理论分子量	54kDa
实测分子量	55kDa
形式	Liquid
保存条件	Store at -20°C. Avoid freeze / thaw cycles. Buffer: PBS with 0.75% BSA,50% glycerol,pH7.3.
偶联物	Unconjugated
阳性对照	Raji,293T,Mouse lung,Mouse kidney,Mouse skeletal muscle,Mouse ovary,Mouse heart
细胞定位	Secreted,extracellular matrix,extracellular space
纯化	Affinity purification

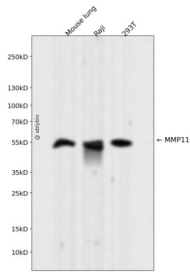
## 抗原信息

抗原信息	Recombinant fusion protein corresponding to Human MMP11.
序列	FRYPLSLSPDDCRGVQHLYGQPWPTVTSRTPALGPQAGIDTNEIAPLEPDAPPDACEASFDAVSTIRGELFFFKAGFVWRL RGGQLQPGYPALASRHWQGLPSPVDAAFEDAQGHWWFFQGAQYWVYDGEKPVLPAPLTELGLVRFVHAALVWGPEK NKIYFFRGRDYWRFHPSTRRVDSVPRRATDWRGVPEIDAAFQDADGYAYFLRGRLYWKFDPVKVKALEGFPRLVGPD FFGCAEPANTFL

## 靶点信息

研究背景	Proteins of the matrix metalloproteinase (MMP) family are involved in the breakdown of extracellular matrix in normal physiological processes, such as embryonic development, reproduction, and tissue remodeling, as well as in disease processes, such as arthritis and metastasis. Most MMP's are secreted as inactive proproteins which are activated when cleaved by extracellular proteinases. However, the enzyme encoded by this gene is activated intracellularly by furin within the constitutive secretory pathway. Also in contrast to other MMP's, this enzyme cleaves alpha 1-proteinase inhibitor but weakly degrades structural proteins of the extracellular matrix.
基因ID	4320
基因名	MMP11
Swiss	P24347
别名	MMP11;SL-3;ST3;STMY3

## 产品验证



Western blot analysis of MMP11 expressed in Mouse lung, Raji, 293T using MMP11 Rabbit mAb at 1:1000. Secondary antibody: HRP Goat Anti-Rabbit IgG (H+L) at 1:5000. Lysates/proteins: 30ug per lane. Blocking buffer: 5% non-fat dry milk in TBST. Detection: ECL Enhanced Kit. Exposure time: 120s.

## 实验步骤

访问官网浏览详情: [www.ablybio.cn](http://www.ablybio.cn)