

PREPL Rabbit mAb

货号: **AYM29392**

产品信息

反应	Human,Mouse,Rat
宿主	Rabbit
克隆性	Monoclonal
预测反应	
应用	WB IHC IF/ICC IP
推荐浓度	WB: 1:500 - 1:2000 IHC: 1:50 - 1:200 IF/ICC: 1:50 - 1:200 IP: 1:20 - 1:50
理论分子量	73kDa/76kDa/83kDa
实测分子量	70kDa
形式	Liquid
保存条件	Store at -20°C. Avoid freeze / thaw cycles. Buffer: PBS with 0.75% BSA,50% glycerol,pH7.3.
偶联物	Unconjugated
阳性对照	U-87MG,Mouse heart,Rat brain
细胞定位	Cytoplasm,cytosol
纯化	Affinity purification

抗原信息

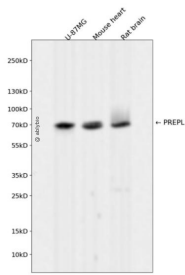
抗原信息	Recombinant fusion protein corresponding to Human PREPL.
序列	AVTLEAPFLDVLNMTMDTTLPLTLEELEEWGNPSSDEKHKNYIKRYCPYQNIKPQHYPHSIHITAYENDERVPLKGIVSYTEKLEAIAEHAKTGTGEGYQTPNIILDIQPGGNHVIEDSHHKITAQIKFLYEELGLDSTSVFEDLKKYLKF

靶点信息

研究背景	The protein encoded by this gene belongs to the prolyl oligopeptidase subfamily of serine peptidases. Mutations in this gene have been associated with hypotonia-cystinuria syndrome, also known as the 2p21 deletion syndrome. Several alternatively spliced transcript variants encoding either the same or different isoforms have been described for this gene.
------	---

基因ID	9581
基因名	PREPL
Swiss	Q4J6C6
别名	PREPL;CMS22

产品验证



Western blot analysis of PREPL expressed in U-87MG, Mouse heart, Rat brain using PREPL Rabbit mAb at 1:1000. Secondary antibody: HRP Goat Anti-Rabbit IgG (H+L) at 1:5000. Lysates/proteins: 30ug per lane. Blocking buffer: 5% non-fat dry milk in TBST. Detection: ECL Enhanced Kit. Exposure time: 120s.

实验步骤

访问官网浏览详情: www.ablybio.cn