

RPE65 Rabbit mAb

货号: **AYM29387**

产品信息

反应	Human,Mouse,Rat
宿主	Rabbit
克隆性	Monoclonal
预测反应	
应用	WB IP
推荐浓度	WB: 1:500 - 1:2000 IP: 1:20 - 1:50
理论分子量	61kDa
实测分子量	61kDa
形式	Liquid
保存条件	Store at -20°C. Avoid freeze / thaw cycles. Buffer: PBS with 0.75% BSA,50% glycerol,pH7.3.
偶联物	Unconjugated
阳性对照	Rat eye
细胞定位	Cell membrane,Cytoplasm,Lipid-anchor,Microsome membrane
纯化	Affinity purification

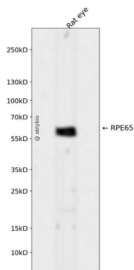
抗原信息

抗原信息	Recombinant fusion protein corresponding to Human RPE65.
序列	TIWLEPEVLFSGPRQAFEFQINYPQYKYGKPYTYAYGLGLNHFPDRCLKLVKTKETWVWQEPDSYPSEPIFVSHPDAL EE DDGVVLSVVVSPGAGQKPA

靶点信息

研究背景	This gene encodes a protein which is located in the retinal pigment epithelium and is involved in the production of 11-cis retinal and in visual pigment regeneration. There are two forms of this protein, a soluble form called sRPE65, and a palmitoylated, membrane-bound form known as mRPE65. mRPE65 serves as the palmitoyl donor for lecithin retinol acyl transferase (LRAT), the enzyme that catalyzes the vitamin A to a 11 trans retinol step of the chromophore regeneration process. Both mRPE65 and sRPE65 also serve as regulatory proteins, with the ratio and concentrations of these molecules playing a role in the inhibition of 11-cis retinal synthesis. Mutations in this gene have been associated with Leber congenital amaurosis type 2 (LCA2) and retinitis pigmentosa. [provided by RefSeq, Jul 2008]
基因ID	6121
基因名	RPE65
Swiss	Q16518
别名	BCO3; LCA2; RP20; mRPE65; rd12; sRPE65

产品验证



Western blot analysis of RPE65 expressed in Rat eye using RPE65 Rabbit mAb at 1:1000. Secondary antibody: HRP Goat Anti-Rabbit IgG (H+L) at 1:5000. Lysates/proteins: 30ug per lane. Blocking buffer: 5% non-fat dry milk in TBST. Detection: ECL Enhanced Kit. Exposure time: 120s.

实验步骤

访问官网浏览详情: www.ablybio.cn