

Septin 2 Rabbit mAb

货号: **AYM29383**

产品信息

反应	Human,Mouse,Rat
宿主	Rabbit
克隆性	Monoclonal
预测反应	
应用	WB IHC IF/ICC IP FC
推荐浓度	WB: 1:500 - 1:2000 IHC: 1:50 - 1:200 IF/ICC: 1:50 - 1:200 IP: 1:20 - 1:50 FC: 1:20 - 1:50
理论分子量	41kDa/42kDa/45kDa
实测分子量	41kDa
形式	Liquid
保存条件	Store at -20°C. Avoid freeze / thaw cycles. Buffer: PBS with 0.75% BSA,50% glycerol,pH7.3.
偶联物	Unconjugated
阳性对照	293T,HepG2,MCF7,HeLa,BT-474,BxPC-3,Mouse spleen,Mouse lung,Mouse ovary
细胞定位	Cell projection,Chromosome,Cleavage furrow,Cytoplasm,Midbody,cell cortex,centromere,cilium membrane,cytoskeleton,kinetochore,spindle
纯化	Affinity purification

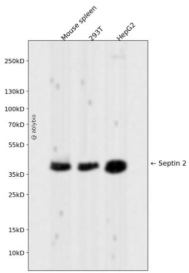
抗原信息

抗原信息	Recombinant fusion protein corresponding to Human Septin 2.
序列	RDCFKTIISYIDEQFERYLHDESGLNRRHIIDNRVHCCFYFISPFHGHLKPLDVAFMKAIHNKVNIVPIAKADTLTKERERLK KRILDEIEEHNIKIYHLPDAESDEDEDFKEQTRLLKASIPFSVVGSNQLIEAKGKKVGRGLYPWGVVEVENPEHNDFLKLRMT LITHMQDLQEVTDQLHYENFRSERLKRGGKRVENEDMNKDQILLEKEELRRMQEMIARMQAQMOMQGGDGDGG ALGHHV

靶点信息

研究背景	Filament-forming cytoskeletal GTPase. Forms a filamentous structure with SEPTIN12, SEPTIN6, SEPTIN2 and probably SEPTIN4 at the sperm annulus which is required for the structural integrity and motility of the sperm tail during postmeiotic differentiation. Required for normal organization of the actin cytoskeleton. Plays a role in the biogenesis of polarized columnar-shaped epithelium by maintaining polyglutamylated microtubules, thus facilitating efficient vesicle transport, and by impeding MAP4 binding to tubulin. Required for the progression through mitosis. Forms a scaffold at the midplane of the mitotic spindle required to maintain CENPE localization at kinetochores and consequently chromosome congression. During anaphase, may be required for chromosome segregation and spindle elongation. Plays a role in ciliogenesis and collective cell movements. In cilia, required for the integrity of the diffusion barrier at the base of the primary cilium that prevents diffusion of transmembrane proteins between the cilia and plasma membranes: probably acts by regulating the assembly of the tectonic-like complex (also named B9 complex by localizing TMEM231 protein. May play a role in the internalization of 2 intracellular microbial pathogens, <i>Listeria monocytogenes</i> and <i>Shigella flexneri</i> .
基因ID	4735
基因名	SEPT2
Swiss	Q15019
别名	SEPT2;DIFF6;NEDD-5;NEDD5;Pnut13;hNedd5;septin-2

产品验证



Western blot analysis of Septin 2 expressed in Mouse spleen, 293T, HepG2 using Septin 2 Rabbit mAb at 1:1000. Secondary antibody: HRP Goat Anti-Rabbit IgG (H+L) at 1:5000. Lysates/proteins: 30ug per lane. Blocking buffer: 5% non-fat dry milk in TBST. Detection: ECL Enhanced Kit. Exposure time: 120s.

实验步骤

访问官网浏览详情: www.ablybio.cn