

Haptoglobin Rabbit mAb

货号: **AYM29379**

产品信息

反应	Human,Mouse,Rat
宿主	Rabbit
克隆性	Monoclonal
预测反应	
应用	WB
推荐浓度	WB: 1:500 - 1:2000
理论分子量	38kDa/45kDa
实测分子量	45kDa
形式	Liquid
保存条件	Store at -20°C. Avoid freeze / thaw cycles. Buffer: PBS with 0.75% BSA,50% glycerol,pH7.3.
偶联物	Unconjugated
阳性对照	HEK-293 cells, human liver tissue
细胞定位	Secreted
纯化	Affinity purification

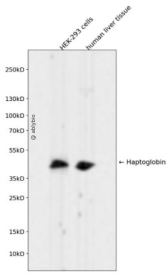
抗原信息

抗原信息	Recombinant fusion protein corresponding to Human Haptoglobin.
序列	HHNLTGATLINEQWLLTTAKNLFNLHSENASAATAKDIAPTLTLYVGKKQLVEIEKVVLPNYSQVDIGLIKQKQKSVNERVMPI CLPSKDYAEVGRVGYVSGWGRNANFKFTDHLKYVMLPVADQDQCIRHYEGSTVPEKKTSPVGVQPILNEHTFCAGMS KYQEDTCYGDAGSAFAVHDLEEDTWYATGILSFDKSCAFAEYGVYVKVTSIQDWWVQKTIAEN

靶点信息

研究背景	This gene encodes a preproprotein, which is processed to yield both alpha and beta chains, which subsequently combine as a tetramer to produce haptoglobin. Haptoglobin functions to bind free plasma hemoglobin, which allows degradative enzymes to gain access to the hemoglobin, while at the same time preventing loss of iron through the kidneys and protecting the kidneys from damage by hemoglobin. Mutations in this gene and/or its regulatory regions cause ahaptoglobinemia or hypohaptoglobinemia. This gene has also been linked to diabetic nephropathy, the incidence of coronary artery disease in type 1 diabetes, Crohn's disease, inflammatory disease behavior, primary sclerosing cholangitis, susceptibility to idiopathic Parkinson's disease, and a reduced incidence of Plasmodium falciparum malaria. The protein encoded also exhibits antimicrobial activity against bacteria. A similar duplicated gene is located next to this gene on chromosome 16. Multiple transcript variants encoding different isoforms have been found for this gene.
基因ID	3240
基因名	HP
Swiss	P00738
别名	HP;BP;HP2ALPHA2;HPA1S

产品验证



Western blot analysis of Haptoglobin expressed in HEK-293 cells, human liver tissue using Haptoglobin Rabbit mAb at 1:1000. Secondary antibody: HRP Goat Anti-Rabbit IgG (H+L) at 1:5000. Lysates/proteins: 30 ug per lane. Blocking buffer: 5% non-fat dry milk in TBST. Detection: ECL Enhanced Kit. Exposure time: 1 20s.

实验步骤

访问官网浏览详情: www.ablybio.cn