

# ROR beta Rabbit mAb

货号: **AYM29375**

## 产品信息

反应	Human,Mouse
宿主	Rabbit
克隆性	Monoclonal
预测反应	
应用	WB
推荐浓度	<b>WB:</b> 1:500 - 1:2000
理论分子量	53kDa
实测分子量	53kDa
形式	Liquid
保存条件	Store at -20°C. Avoid freeze / thaw cycles. Buffer: PBS with 0.75% BSA,50% glycerol,pH7.3.
偶联物	Unconjugated
阳性对照	PC-12,C6,SH-SY5Y,Y79,Mouse eye
细胞定位	nucleoplasm,nucleus
纯化	Affinity purification

## 抗原信息

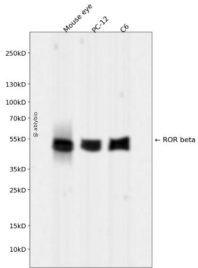
抗原信息	Recombinant fusion protein corresponding to Human ROR beta.
序列	MCENQLKTKADATAQIEVIPCKICGDKSSGIHYGVITCEGCKGFFRRSQNNASYSCPRQRNCLIDRTNRNRCQHCR LQKC LALGMSRDAVKFGRMSKKQ

## 靶点信息

研究背景	The protein encoded by this gene is a member of the NR1 subfamily of nuclear hormone receptors. It is a DNA-binding protein that can bind as a monomer or as a homodimer to hormone response elements upstream of several genes to enhance the expression of those genes. The encoded protein has been shown to interact with NM23-2, a nucleoside diphosphate kinase involved in organogenesis and differentiation, and to help regulate the expression of some genes involved in circadian rhythm. [provided by RefSeq, Feb 20 14]
基因ID	6096

基因名	
Swiss	Q92753
别名	NR1F2; ROR-BETA; RZR-BETA; RZRB; bA133M9.1

## 产品验证



Western blot analysis of ROR beta expressed in Mouse eye,PC-12,C6 using ROR beta Rabbit mAb at 1:1000. Secondary antibody: HRP Goat Anti-Rabbit IgG (H+L) at 1:5000. Lysates/proteins: 30ug per lane . Blocking buffer: 5% non-fat dry milk in TBST. Detection: ECL Enhanced Kit. Exposure time: 120s.

## 实验步骤

访问官网浏览详情: [www.ablybio.cn](http://www.ablybio.cn)