

# MMP1 Rabbit mAb

货号: **AYM29373**

## 产品信息

反应	Human
宿主	Rabbit
克隆性	Monoclonal
预测反应	
应用	WB IHC ICC FC
推荐浓度	<b>WB:</b> 1:500 - 1:2000 <b>IHC:</b> 1:50 - 1:200 <b>ICC:</b> 1:50 - 1:200 <b>FC:</b> 1:20 - 1:50
理论分子量	54kDa
实测分子量	54kDa
形式	Liquid
保存条件	Store at -20°C. Avoid freeze / thaw cycles. Buffer: PBS with 0.75% BSA,50% glycerol,pH7.3.
偶联物	Unconjugated
阳性对照	SKOV3
细胞定位	Secreted,extracellular matrix,extracellular space
纯化	Affinity purification

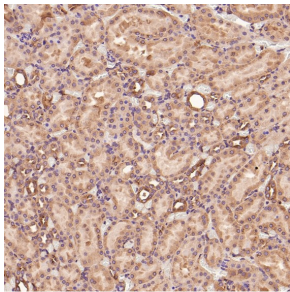
## 抗原信息

抗原信息	Recombinant fusion protein corresponding to Human MMP1.
序列	GVPDVAQFVLTEGNPRWEQTHLYRIENYTPDLPRADVDHAIEKAFQLWSNVTPLTFTKVSEGQADIMISFVRGDHRDNS PFDGPGGNLAHAFQPGPGIGGDAHFDERWTNNFREY

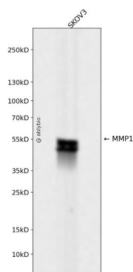
## 靶点信息

研究背景	This gene encodes a member of the peptidase M10 family of matrix metalloproteinases (MMPs). Proteins in this family are involved in the breakdown of extracellular matrix in normal physiological processes, such as embryonic development, reproduction, and tissue remodeling, as well as in disease processes, such as arthritis and metastasis. The encoded preproprotein is proteolytically processed to generate the mature protease. This secreted protease breaks down the interstitial collagens, including types I, II, and III. The gene is part of a cluster of MMP genes on chromosome 11. Mutations in this gene are associated with chronic obstructive pulmonary disease (COPD). Alternative splicing results in multiple transcript variants, at least one of which encodes an isoform that is proteolytically processed.
基因ID	4312
基因名	MMP1
Swiss	P03956
别名	MMP1;CLG;CLGN

## 产品验证



Immunohistochemical analysis of paraffin-embedded Rat kidney, using the Antibody at 1:50 dilution.



Western blot analysis of MMP1 expressed in SKOV3 using MMP1 Rabbit mAb at 1:1000. Secondary antibody: HRP Goat Anti-Rabbit IgG (H+L) at 1:5000. Lysates/proteins: 30ug per lane. Blocking buffer: 5% non-fat dry milk in TBST. Detection: ECL Enhanced Kit. Exposure time: 120s.

## 实验步骤

访问官网浏览详情: [www.ablybio.cn](http://www.ablybio.cn)