

Prolactin Receptor Rabbit mAb

货号: **AYM29366**

产品信息

反应	Human,Mouse,Rat
宿主	Rabbit
克隆性	Monoclonal
预测反应	
应用	WB IHC IF/ICC
推荐浓度	WB: 1:500 - 1:2000 IHC: 1:50 - 1:200 IF/ICC: 1:50 - 1:200
理论分子量	95kDa
实测分子量	95kDa
形式	Liquid
保存条件	Store at -20°C. Avoid freeze / thaw cycles. Buffer: PBS with 0.75% BSA,50% glycerol,pH7.3.
偶联物	Unconjugated
阳性对照	HepG2,BT-474,MCF7
细胞定位	cell surface,endosome lumen,external side of plasma membrane,extracellular region,plasma membrane
纯化	Affinity purification

抗原信息

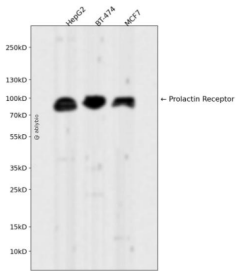
抗原信息	Recombinant fusion protein corresponding to Human Prolactin Receptor.
序列	MKENVASATVFTLLFLNTCLLNGQLPPGKPEIFKCRSPNKETFTCWWRPGTDGGLPTNYSPTYHREGETLMHECPDYITG GPNSCHFGKQYTSMWRTYI

靶点信息

研究背景	This gene encodes a receptor for the anterior pituitary hormone, prolactin, and belongs to the type I cyto kine receptor family. Prolactin-dependent signaling occurs as the result of ligand-induced dimerization of the prolactin receptor. Several alternatively spliced transcript variants encoding different membrane-bou nd and soluble isoforms have been described for this gene, which may function to modulate the endocrin e and autocrine effects of prolactin in normal tissue and cancer. [provided by RefSeq, Feb 2011]
------	-----------------------------------------------------------------------------------------------------------------------------------------------------------------------------------------------------------------------------------------------------------------------------------------------------------------------------------------------------------------------------------------------------------------------------------------------------------------------------------------------------------------------------------------

基因ID	5618
基因名	PRLR
Swiss	P16471
别名	HPRL; MFAB; hPRLr1

产品验证



Western blot analysis of Prolactin Receptor expressed in HepG2, BT-474, MCF7 using Prolactin Receptor Rabbit mAb at 1:1000. Secondary antibody: HRP Goat Anti-Rabbit IgG (H+L) at 1:5000. Lysates/proteins: 30ug per lane. Blocking buffer: 5% non-fat dry milk in TBST. Detection: ECL Enhanced Kit. Exposure time: 120s.

实验步骤

访问官网浏览详情: www.ablybio.cn