

# Yes1 Rabbit mAb

货号: **AYM29357**

## 产品信息

反应	Human,Mouse,Rat
宿主	Rabbit
克隆性	Monoclonal
预测反应	
应用	WB IHC ICC IP
推荐浓度	<b>WB:</b> 1:500 - 1:2000 <b>IHC:</b> 1:50 - 1:200 <b>ICC:</b> 1:50 - 1:200 <b>IP:</b> 1:20 - 1:50
理论分子量	60kDa
实测分子量	61kDa
形式	Liquid
保存条件	Store at -20°C. Avoid freeze / thaw cycles. Buffer: PBS with 0.75% BSA,50% glycerol,pH7.3.
偶联物	Unconjugated
阳性对照	BT-474,HepG2,Mouse liver,Mouse kidney,Mouse heart
细胞定位	Cell membrane,Cytoplasm,centrosome,cytoskeleton,cytosol,microtubule organizing center
纯化	Affinity purification

## 抗原信息

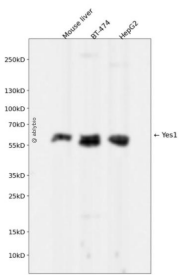
抗原信息	Recombinant fusion protein corresponding to Human Yes1.
序列	MGCIKSKENKSPAIKYRPENTPEPVSTSVSHYGAEPPTVSPCPSSSAKGTAVNFSSLSMTPFGGSSGVTPFGGASSFSVVPSSYPAGLTGGVTIFVALDYDYEARTTEDLSFKKGERFQIINTEGDWWEARSATGKNGYIPSNYVAPADSIQAEWYFGKMGRKDAERLLLNPNGNQRGIFLVRESETTKGAYLSIRDWDEIRGDNVKHYKIRKLDNGGYITTRAQFDTLQKLVKHYTEHADGLCHK

## 靶点信息

研究背景	This gene is the cellular homolog of the Yamaguchi sarcoma virus oncogene. The encoded protein has tyrosine kinase activity and belongs to the src family of proteins. This gene lies in close proximity to thymidine late synthase gene on chromosome 18, and a corresponding pseudogene has been found on chromosome 22.
------	----------------------------------------------------------------------------------------------------------------------------------------------------------------------------------------------------------------------------------------------------------------------------------------------------------------------------

基因ID	7525
基因名	YES1
Swiss	P07947
别名	YES1;HsT441;P61-YES;Yes;c-yes

## 产品验证



Western blot analysis of Yes1 expressed in Mouse liver,BT-474,HepG2 using Yes1 Rabbit mAb at 1:1000. Secondary antibody: HRP Goat Anti-Rabbit IgG (H+L) at 1:5000. Lysates/proteins: 30ug per lane. Blocking buffer: 5% non-fat dry milk in TBST. Detection: ECL Enhanced Kit. Exposure time: 120s.

## 实验步骤

访问官网浏览详情: [www.ablybio.cn](http://www.ablybio.cn)