

# PEF1 Rabbit mAb

货号: **AYM29356**

## 产品信息

反应	Human,Mouse,Rat
宿主	Rabbit
克隆性	Monoclonal
预测反应	
应用	WB
推荐浓度	<b>WB:</b> 1:500 - 1:2000
理论分子量	30kDa
实测分子量	30kDa
形式	Liquid
保存条件	Store at -20°C. Avoid freeze / thaw cycles. Buffer: PBS with 0.75% BSA,50% glycerol,pH7.3.
偶联物	Unconjugated
阳性对照	Jurkat,HeLa,293T,Mouse liver,Rat pancreas
细胞定位	Cytoplasm,Membrane,Peripheral membrane protein
纯化	Affinity purification

## 抗原信息

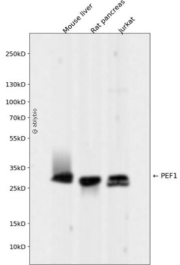
抗原信息	Recombinant fusion protein corresponding to Human PEF1.
序列	APGGPYGPPAGGGPYGHPNPGMFPSGTPGGPYGGAAPGGPYGQPPSSYGAQQPGLYGQGGAPPNVDPEAYSWFQSV DSDHSGYISMKELKQALVNCNWSS

## 靶点信息

研究背景	This gene encodes a calcium-binding protein belonging to the penta-EF-hand protein family. The encoded protein has been shown to form a heterodimer with the programmed cell death 6 gene product and may modulate its function in Ca(2+) signaling. Alternative splicing results in multiple transcript variants and a pseudogene has been identified on chromosome 1.
基因ID	553115

基因名	PEF1
Swiss	Q9UBV8
别名	PEF1;ABP32;PEF1A;peflin

## 产品验证



Western blot analysis of PEF1 expressed in Mouse liver,Rat pancreas,Jurkat using PEF1 Rabbit mAb at 1:1000. Secondary antibody: HRP Goat Anti-Rabbit IgG (H+L) at 1:5000. Lysates/proteins: 30ug per lane. Blocking buffer: 5% non-fat dry milk in TBST. Detection: ECL Enhanced Kit. Exposure time: 120s.

## 实验步骤

访问官网浏览详情: [www.ablybio.cn](http://www.ablybio.cn)