

# GLB1 Rabbit mAb

货号: **AYM29355**

## 产品信息

反应	Human,Mouse,Rat
宿主	Rabbit
克隆性	Monoclonal
预测反应	
应用	WB FC
推荐浓度	<b>WB:</b> 1:500 - 1:2000 <b>FC:</b> 1:20 - 1:50
理论分子量	60kDa/72kDa/76kDa
实测分子量	95kDa
形式	Liquid
保存条件	Store at -20°C. Avoid freeze / thaw cycles. Buffer: PBS with 0.75% BSA,50% glycerol,pH7.3.
偶联物	Unconjugated
阳性对照	HCT116,Rat brain
细胞定位	Cytoplasm,Lysosome,perinuclear region
纯化	Affinity purification

## 抗原信息

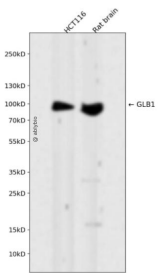
抗原信息	Recombinant fusion protein corresponding to Human GLB1.
序列	TSYDYDAPLSEAGDLTEKYFALRNIIQKFEKVPEGPIPPSTPKFAYGKVTLEKLTGVGAALDILCPSGPIKSLYPLTFIQVKQHY GFVLYRRTTLPQDCSNPAPLSSPLNGVHDRAVAVDVGIPQGVLERNNVITLNIITGKAGATLDLLVENMGRVNYGAYINDFKG LVSNTLSSNILDWTIFPLDTEDAVCSHLGGWGHDRDSGHHDEAWAHNSSNYTLPAFYMGNFSPSGIPDLPQDTFIQFP GWTKGQVWINGFNLGRYWPARGPQLTLFVPQHILMTSAPNTITVLELEWAPCSSDDPELCAVTFVDRPVGSSVTYDHP KPVEKRLMPPPPQKNKDSWLDHV

## 靶点信息

研究背景	This gene encodes a member of the glycosyl hydrolase 35 family of proteins. Alternative splicing results in multiple transcript variants, at least one of which encodes a preproprotein that is proteolytically processed to generate the mature lysosomal enzyme. This enzyme catalyzes the hydrolysis of a terminal beta-linked galactose residue from ganglioside substrates and other glycoconjugates. Mutations in this gene may result in GM1-gangliosidosis and Morquio B syndrome.
------	--------------------------------------------------------------------------------------------------------------------------------------------------------------------------------------------------------------------------------------------------------------------------------------------------------------------------------------------------------------------------------------------------------------------------------------------------------------------------------------------

基因ID	2720
基因名	GLB1
Swiss	P16278
别名	GLB1;EBP;ELNR1;MPS4B

### 产品验证



Western blot analysis of GLB1 expressed in HCT116,Rat brain using GLB1 Rabbit mAb at 1:1000. Secondary antibody: HRP Goat Anti-Rabbit IgG (H+L) at 1:5000. Lysates/proteins: 30ug per lane. Blocking buffer: 5% non-fat dry milk in TBST. Detection: ECL Enhanced Kit. Exposure time: 120s.

### 实验步骤

访问官网浏览详情: [www.ablybio.cn](http://www.ablybio.cn)