

MMP17 Rabbit mAb

货号: **AYM29353**

产品信息

反应	Human,Mouse,Rat
宿主	Rabbit
克隆性	Monoclonal
预测反应	
应用	WB IHC IF/ICC
推荐浓度	WB: 1:500 - 1:2000 IHC: 1:50 - 1:200 IF/ICC: 1:50 - 1:200
理论分子量	57kDa/66kDa
实测分子量	58kDa
形式	Liquid
保存条件	Store at -20°C. Avoid freeze / thaw cycles. Buffer: PBS with 0.75% BSA,50% glycerol,pH7.3.
偶联物	Unconjugated
阳性对照	SW480,RAW264.7,Mouse testis,Rat testis
细胞定位	Cell membrane,Extracellular side,GPI-anchor,Lipid-anchor,Secreted,extracellular matrix,extracellular space
纯化	Affinity purification

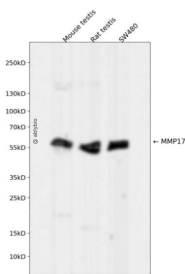
抗原信息

抗原信息	Recombinant fusion protein corresponding to Human MMP17.
序列	IMRPYYQGPPVGDPLRYGLPYEDKVRVWQLYGVRESVSPTAQPEEPPLPEPPDNRSSAPPRKDVPHRCSTHFDVAQIRG EAFFFKGKYFWRLTRDRHLVSLQPAQMHRFWRGLPLHLDSVDVYERTSDHKIVFFKGDYVWFKDNVVEEGYPRPVS DFSLPPGGIDAAFSWAHNDRTYFFKDQLYWRYDDHTRHMDPGYPAQSPLWRGVPSTLDDAMRWSGDGASYFFRGQEY WKVLDGELEVAPGYPQSTARDWLVCGDSQADGSVAAGVDAEAGPRAPPQHDQSRSEGDGYEVCSCS

靶点信息

研究背景	This gene encodes a member of the peptidase M10 family and membrane-type subfamily of matrix metalloproteinases (MMPs). Proteins in this family are involved in the breakdown of extracellular matrix in normal physiological processes, such as embryonic development, reproduction, and tissue remodeling, as well as in disease processes, such as arthritis and metastasis. Members of this subfamily contain a transmembrane domain suggesting that these proteins are expressed at the cell surface rather than secreted. The encoded preproprotein is proteolytically processed to generate the mature protease. This protein is unique among the membrane-type matrix metalloproteinases in that it is anchored to the cell membrane via a glycosylphosphatidylinositol (GPI) anchor. Elevated expression of the encoded protein has been observed in osteoarthritis and multiple human cancers.
基因ID	4326
基因名	MMP17
Swiss	Q9ULZ9
别名	MMP17;MMP-17;MT4-MMP;MT4MMP;MTMMP4

产品验证



Western blot analysis of MMP17 expressed in Mouse testis,Rat testis,SW480 using MMP17 Rabbit mAb at 1:1000. Secondary antibody: HRP Goat Anti-Rabbit IgG (H+L) at 1:5000. Lysates/proteins: 30ug per lane. Blocking buffer: 5% non-fat dry milk in TBST. Detection: ECL Enhanced Kit. Exposure time: 120s.

实验步骤

访问官网浏览详情: www.ablybio.cn