

Ferritin Heavy Chain Rabbit mAb

货号: **AYM29352**

产品信息

反应	Human
宿主	Rabbit
克隆性	Monoclonal
预测反应	
应用	WB IHC
推荐浓度	WB: 1:500 - 1:2000 IHC: 1:50 - 1:200
理论分子量	21kDa
实测分子量	21kDa
形式	Liquid
保存条件	Store at -20°C. Avoid freeze / thaw cycles. Buffer: PBS with 0.75% BSA,50% glycerol,pH7.3.
偶联物	Unconjugated
阳性对照	Mouse brain,Mouse heart,Rat brain,Rat liver,U-251MG
细胞定位	cytoplasm,cytosol,extracellular exosome,extracellular region,nucleus
纯化	Affinity purification

抗原信息

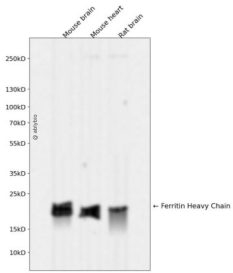
抗原信息	Recombinant fusion protein corresponding to Human Ferritin Heavy Chain.
序列	MTTASTSQVRQNYHQDSEAAINRQINLELYASYVYLSMSYFDRDDVALKNFAKYFLHQSHEEREHAEKLMKLNQRGG RIFLQDIKKPDCDDWESGLNA

靶点信息

研究背景	This gene encodes the heavy subunit of ferritin, the major intracellular iron storage protein in prokaryotes and eukaryotes. It is composed of 24 subunits of the heavy and light ferritin chains. Variation in ferritin subunit composition may affect the rates of iron uptake and release in different tissues. A major function of ferritin is the storage of iron in a soluble and nontoxic state. Defects in ferritin proteins are associated with several neurodegenerative diseases. This gene has multiple pseudogenes. Several alternatively spliced transcript variants have been observed, but their biological validity has not been determined. [provided by RefSeq, Jul 2008]
------	--

基因ID	2495
基因名	FTH1
Swiss	P02794
别名	FHC;FTH;FTHL6;HFE5;PIG15;PLIF;Ferritin;FTH1

产品验证



Western blot analysis of Ferritin Heavy Chain expressed in Mouse brain, Mouse heart, Rat brain using Ferritin Heavy Chain Rabbit mAb at 1:1000. Secondary antibody: HRP Goat Anti-Rabbit IgG (H+L) at 1:5000. Lysates/proteins: 30ug per lane. Blocking buffer: 5% non-fat dry milk in TBST. Detection: ECL Enhanced Kit. Exposure time: 120s.

实验步骤

访问官网浏览详情: www.ablybio.cn