

RASSF1 Rabbit mAb

货号: **AYM29351**

产品信息

反应	Human
宿主	Rabbit
克隆性	Monoclonal
预测反应	
应用	WB IHC
推荐浓度	WB: 1:500 - 1:2000 IHC: 1:50 - 1:200
理论分子量	8kDa/9kDa/16kDa/21kDa/31kDa/38kDa/39kDa
实测分子量	39kDa
形式	Liquid
保存条件	Store at -20°C. Avoid freeze / thaw cycles. Buffer: PBS with 0.75% BSA, 50% glycerol, pH7.3.
偶联物	Unconjugated
阳性对照	HeLa, HepG2, 293T, SW480
细胞定位	Cytoplasm, Nucleus, Nucleus, centrosome, cytoskeleton, microtubule organizing center, spindle, spindle pole
纯化	Affinity purification

抗原信息

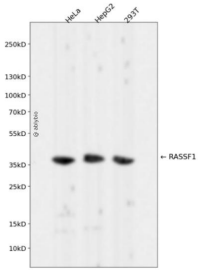
抗原信息	Recombinant fusion protein corresponding to Human RASSF1.
序列	CCGPRDLGWEP AVERDTNVDEPVEWETPDL SQA EIEQKIKEYNAQINSNLFMSLNKDG SYTGFIKVQLKLRPVSVPSSKK PPSLQDARRGPGRGTSVRRRTSFYLPKDAVKHLHVL SRTRAREVIEALLRKFLVDDPRKFALFERAERHGQVYLRKLLDD EQPLRLRLLAGPSDKALSFVLKENDSGEVNWD AFSMPELHNFLRILQREEEHLRQILQKYSYCRQKIQEALHACPLG

靶点信息

研究背景	This gene encodes a protein similar to the RAS effector proteins. Loss or altered expression of this gene has been associated with the pathogenesis of a variety of cancers, which suggests the tumor suppressor function of this gene. The inactivation of this gene was found to be correlated with the hypermethylation of its CpG-island promoter region. The encoded protein was found to interact with DNA repair protein XPA. The protein was also shown to inhibit the accumulation of cyclin D1, and thus induce cell cycle arrest. Several alternatively spliced transcript variants of this gene encoding distinct isoforms have been reported.
------	--

基因ID	11186
基因名	RASSF1
Swiss	Q9NS23
别名	RASSF1;123F2;NORE2A;RASSF1A;RDA32;REH3P21

产品验证



Western blot analysis of RASSF1 expressed in HeLa, HepG2, 293T using RASSF1 Rabbit mAb at 1:1000. Secondary antibody: HRP Goat Anti-Rabbit IgG (H+L) at 1:5000. Lysates/proteins: 30ug per lane. Blocking buffer: 5% non-fat dry milk in TBST. Detection: ECL Enhanced Kit. Exposure time: 120s.

实验步骤

访问官网浏览详情: www.ablybio.cn