

Wilms Tumor Protein Rabbit mAb

货号: **AYM29344**

产品信息

反应	Human,Mouse
宿主	Rabbit
克隆性	Monoclonal
预测反应	
应用	WB IHC IF/ICC FC
推荐浓度	WB: 1:500 - 1:2000 IHC: 1:50 - 1:200 IF/ICC: 1:50 - 1:200 FC: 1:20 - 1:50
理论分子量	33kDa/34kDa/47kDa/48kDa/49kDa/55kDa/56kDa
实测分子量	55kDa
形式	Liquid
保存条件	Store at -20°C. Avoid freeze / thaw cycles. Buffer: PBS with 0.75% BSA,50% glycerol,pH7.3.
偶联物	Unconjugated
阳性对照	OVCAR3,K-562,Mouse kidney,Rat kidney
细胞定位	Cytoplasm,Nucleus,Nucleus speckle,nucleolus,nucleoplasm
纯化	Affinity purification

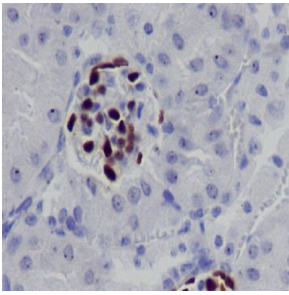
抗原信息

抗原信息	Recombinant fusion protein corresponding to Human Wilms Tumor Protein.
序列	MGSDVDRDLNALLPAVPSLGGGGGALPVSAAQWAPVLDFAAPPASAYGSLGGPAPPAPPPPPPPPHSFIKQEPSWG GAEPHEEQCLSAFTVHFSGQFTGTAGACRYGPFPPPPSQASSGQARMFPNAPYLPSCLESQPAIRNQGYSTVTFDGT PSYGHTPSHHAAQFPNHSFKHEDPMGQQGSLGEQQYSVPPVYGCHTPTDSDCTGSQALLLRTPYSSDNLQMTSQLE CMTWNQMNLGATLKGVAAGSSSVKWTEGQSNHSTGYESDNHTTTPILCGAQYRIHTHGVRGIQDVR

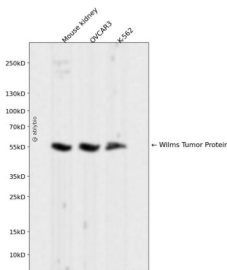
靶点信息

研究背景	This gene encodes a transcription factor that contains four zinc-finger motifs at the C-terminus and a proline/glutamine-rich DNA-binding domain at the N-terminus. It has an essential role in the normal development of the urogenital system, and it is mutated in a small subset of patients with Wilms tumor. This gene exhibits complex tissue-specific and polymorphic imprinting pattern, with biallelic, and monoallelic expression from the maternal and paternal alleles in different tissues. Multiple transcript variants have been described. In several variants, there is evidence for the use of a non-AUG (CUG) translation initiation codon upstream of, and in-frame with the first AUG. Authors of PMID:7926762 also provide evidence that WT1 mRNA undergoes RNA editing in human and rat, and that this process is tissue-restricted and developmentally regulated.
基因ID	7490
基因名	WT1
Swiss	P19544
别名	WT1;AWT1;EWS-WT1;GUD;NPHS4;WAGR;WIT-2;WT33

产品验证



Immunohistochemical analysis of paraffin-embedded mouse kidney, using Wilms Tumor Protein Antibody.



Western blot analysis of Wilms Tumor Protein expressed in Mouse kidney, OVCAR3, K-562 using Wilms Tumor Protein Rabbit mAb at 1:1000. Secondary antibody: HRP Goat Anti-Rabbit IgG (H+L) at 1:5000. Lysates/proteins: 30ug per lane. Blocking buffer: 5% non-fat dry milk in TBST. Detection: ECL Enhanced Kit. Exposure time: 120s.

实验步骤

访问官网浏览详情: www.ablybio.cn