

ARF1 Rabbit mAb

货号: **AYM29339**

产品信息

反应	Human,Mouse,Rat
宿主	Rabbit
克隆性	Monoclonal
预测反应	
应用	WB IHC FC
推荐浓度	WB: 1:500 - 1:2000 IHC: 1:50 - 1:200 FC: 1:20 - 1:50
理论分子量	20kDa
实测分子量	20kDa
形式	Liquid
保存条件	Store at -20°C. Avoid freeze / thaw cycles. Buffer: PBS with 0.75% BSA,50% glycerol,pH7.3.
偶联物	Unconjugated
阳性对照	BT-474,HT-29,SKOV3,MCF7,HeLa,Mouse lung,Mouse brain,Mouse heart,Rat liver
细胞定位	Cell junction,Cytoplasm,Golgi apparatus,Lipid-anchor,Membrane,perinuclear region,postsynaptic cell membrane,postsynaptic density,synapse,synaptosome
纯化	Affinity purification

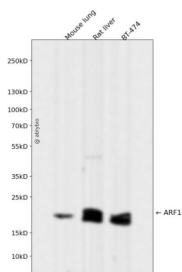
抗原信息

抗原信息	Recombinant fusion protein corresponding to Human ARF1.
序列	VNEAREELMRMLAEDELRDVLLVFANKQDLPNAMNAAEITDKLGLHSLRHRNWYIQATCATSGDGLYEGLDWLSNQLR NQK

靶点信息

研究背景	ADP-ribosylation factor 1 (ARF1) is a member of the human ARF gene family. The family members encode small guanine nucleotide-binding proteins that stimulate the ADP-ribosyltransferase activity of cholera toxin and play a role in vesicular trafficking as activators of phospholipase D. The gene products, including 6 ARF proteins and 11 ARF-like proteins, constitute a family of the RAS superfamily. The ARF proteins are categorized as class I (ARF1, ARF2 and ARF3), class II (ARF4 and ARF5) and class III (ARF6), and members of each class share a common gene organization. The ARF1 protein is localized to the Golgi apparatus and has a central role in intra-Golgi transport. Multiple alternatively spliced transcript variants encoding the same protein have been found for this gene.
基因ID	375
基因名	ARF1
Swiss	P84077
别名	ARF1

产品验证



Western blot analysis of ARF1 expressed in Mouse lung, Rat liver, BT-474 using ARF1 Rabbit mAb at 1:1000. Secondary antibody: HRP Goat Anti-Rabbit IgG (H+L) at 1:5000. Lysates/proteins: 30ug per lane. Blocking buffer: 5% non-fat dry milk in TBST. Detection: ECL Enhanced Kit. Exposure time: 120s.

实验步骤

访问官网浏览详情: www.ablybio.cn