

# CKII alpha Rabbit mAb

货号: **AYM29321**

## 产品信息

反应	Human,Mouse,Rat
宿主	Rabbit
克隆性	Monoclonal
预测反应	
应用	WB IHC FC
推荐浓度	<b>WB:</b> 1:500 - 1:2000 <b>IHC:</b> 1:50 - 1:200 <b>FC:</b> 1:20 - 1:50
理论分子量	29kDa/45kDa
实测分子量	45kDa
形式	Liquid
保存条件	Store at -20°C. Avoid freeze / thaw cycles. Buffer: PBS with 0.75% BSA,50% glycerol,pH7.3.
偶联物	Unconjugated
阳性对照	293
细胞定位	Nucleus
纯化	Affinity purification

## 抗原信息

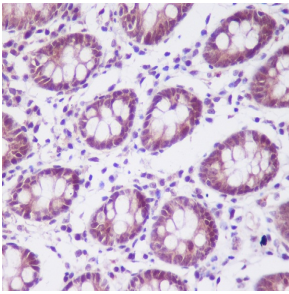
抗原信息	Recombinant fusion protein corresponding to Human CKII alpha.
序列	

## 靶点信息

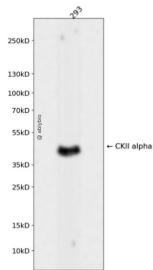
研究背景	Casein kinase II is a serine/threonine protein kinase that phosphorylates acidic proteins such as casein. It is involved in various cellular processes, including cell cycle control, apoptosis, and circadian rhythm. The kinase exists as a tetramer and is composed of an alpha, an alpha-prime, and two beta subunits. The alpha subunits contain the catalytic activity while the beta subunits undergo autophosphorylation. The protein encoded by this gene represents the alpha subunit. While this gene is found on chromosome 20, a related transcribed pseudogene is found on chromosome 11. Three transcript variants encoding two different proteins have been found for this gene.
------	--

基因ID	1457
基因名	CSNK2A1
Swiss	P68400
别名	CK2A1;CKII;CSNK2A3;OCNDS;CKII alpha;CSNK2A1;Cka1;Cka2

## 产品验证



Immunohistochemical analysis of paraffin-embedded human colon, using CKII alpha Antibody.



Western blot analysis of CKII alpha expressed in 293 using CKII alpha Rabbit mAb at 1:1000. Secondary antibody: HRP Goat Anti-Rabbit IgG (H+L) at 1:5000. Lysates/proteins: 30ug per lane. Blocking buffer: 5% non-fat dry milk in TBST. Detection: ECL Enhanced Kit. Exposure time: 120s

## 实验步骤

访问官网浏览详情: [www.ablybio.cn](http://www.ablybio.cn)