

SCIN Rabbit mAb

货号: **AYM29319**

产品信息

反应	Human,Mouse,Rat
宿主	Rabbit
克隆性	Monoclonal
预测反应	
应用	WB IHC
推荐浓度	WB: 1:500 - 1:2000 IHC: 1:50 - 1:200
理论分子量	52kDa/65kDa/80kDa
实测分子量	80kDa
形式	Liquid
保存条件	Store at -20°C. Avoid freeze / thaw cycles. Buffer: PBS with 0.75% BSA,50% glycerol,pH7.3.
偶联物	Unconjugated
阳性对照	HT-29,SGC-7901
细胞定位	actin cytoskeleton,cell cortex,cell projection,cytoplasm,extracellular exosome,podosome
纯化	Affinity purification

抗原信息

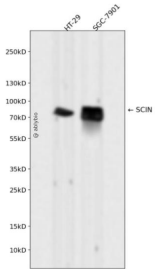
抗原信息	Recombinant fusion protein corresponding to Human SCIN.
序列	MARELYHEEFARAGKQAGLQVWRIEKLELVPVPSAHGDFYVGDAYLVLHTAKTSRGFTYHLHFWLGKECSQDESTAAAI FTVQMDDYLGGKPVQNLRELQ

靶点信息

研究背景	SCIN is a Ca(2+)-dependent actin-severing and -capping protein (Zunino et al., 2001 [PubMed 11568009]).[supplied by OMIM, May 2010]
基因ID	85477
基因名	SCIN

Swiss	Q9Y6U3
别名	SCIN;adseverin

产品验证



Western blot analysis of SCIN expressed in HT-29,SGC-7901 using SCIN Rabbit mAb at 1:1000. Secondary antibody: HRP Goat Anti-Rabbit IgG (H+L) at 1:5000. Lysates/proteins: 30ug per lane. Blocking buffer: 5% non-fat dry milk in TBST. Detection: ECL Enhanced Kit. Exposure time: 120s.

实验步骤

访问官网浏览详情: www.ablybio.cn