

Aurora A Rabbit mAb

货号: **AYM29317**

产品信息

反应	Human,Mouse
宿主	Rabbit
克隆性	Monoclonal
预测反应	
应用	WB IF/ICC FC
推荐浓度	WB: 1:500 - 1:2000 IF/ICC: 1:50 - 1:200 FC: 1:20 - 1:50
理论分子量	45kDa
实测分子量	46kDa
形式	Liquid
保存条件	Store at -20°C. Avoid freeze / thaw cycles. Buffer: PBS with 0.75% BSA,50% glycerol,pH7.3.
偶联物	Unconjugated
阳性对照	HeLa,HT-29
细胞定位	Cytoplasm,centriole,centrosome,cilium basal body,cytoskeleton,microtubule organizing center,spindle pole
纯化	Affinity purification

抗原信息

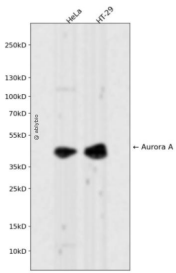
抗原信息	Recombinant fusion protein corresponding to Human Aurora A.
序列	RTTLC

靶点信息

研究背景	The protein encoded by this gene is a cell cycle-regulated kinase that appears to be involved in microtubule formation and/or stabilization at the spindle pole during chromosome segregation. The encoded protein is found at the centrosome in interphase cells and at the spindle poles in mitosis. This gene may play a role in tumor development and progression. A processed pseudogene of this gene has been found on chromosome 1, and an unprocessed pseudogene has been found on chromosome 10. Multiple transcript variants encoding the same protein have been found for this gene.
------	---

基因ID	6790
基因名	AURKA
Swiss	O14965
别名	AURKA;AIK;ARK1;AURA;BTAK;PPP1R47;STK15;STK6;STK7

产品验证



Western blot analysis of Aurora A expressed in HeLa,HT-29 using Aurora A Rabbit mAb at 1:1000. Secondary antibody: HRP Goat Anti-Rabbit IgG (H+L) at 1:5000. Lysates/proteins: 30ug per lane. Blocking buffer: 5% non-fat dry milk in TBST. Detection: ECL Enhanced Kit. Exposure time: 120s.

实验步骤

访问官网浏览详情: www.ablybio.cn