

# 14-3-3 alpha/beta Rabbit mAb

货号: **AYM29315**

## 产品信息

反应	Human,Mouse,Rat
宿主	Rabbit
克隆性	Monoclonal
预测反应	
应用	<a href="#">WB</a> <a href="#">IHC</a> <a href="#">ICC</a> <a href="#">IP</a> <a href="#">FC</a>
推荐浓度	<b>WB:</b> 1:500 - 1:2000 <b>IHC:</b> 1:50 - 1:200 <b>ICC:</b> 1:50 - 1:200 <b>IP:</b> 1:20 - 1:50 <b>FC:</b> 1:20 - 1:50
理论分子量	27kDa/28kDa
实测分子量	28kDa
形式	Liquid
保存条件	Store at -20°C. Avoid freeze / thaw cycles. Buffer: PBS with 0.75% BSA,50% glycerol,pH7.3.
偶联物	Unconjugated
阳性对照	Mouse intestine,Mouse liver,Mouse kidney,HT-29,SW480,BT-474,HepG2
细胞定位	Cytoplasm,Melanosome
纯化	Affinity purification

## 抗原信息

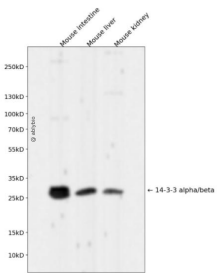
抗原信息	Recombinant fusion protein corresponding to Human 14-3-3 alpha/beta.
序列	AYQEAFEISKKEMQPTHPIRLGLALNFSVFYIEILNSPEKACSLAKTAFDEAIAELDTLNEESYKDSTLIMQLLRDNLTLWTSE NQGDEGDAGEGEN

## 靶点信息

研究背景	This gene encodes a protein belonging to the 14-3-3 family of proteins, members of which mediate signal transduction by binding to phosphoserine-containing proteins. This highly conserved protein family is found in both plants and mammals. The encoded protein has been shown to interact with RAF1 and CDC25 p phosphatases, suggesting that it may play a role in linking mitogenic signaling and the cell cycle machinery. Two transcript variants, which encode the same protein, have been identified for this gene.
------	--

基因ID	7529
基因名	YWHAB
Swiss	P31946
别名	YWHAB;GW128;HEL-S-1;HS1;KCIP-1;YWHAA

### 产品验证



Western blot analysis of 14-3-3 alpha/beta expressed in Mouse intestine, Mouse liver, Mouse kidney and Mouse spleen using 14-3-3 alpha/beta Rabbit mAb at 1:1000. Secondary antibody: HRP Goat Anti-Rabbit IgG (H+L) at 1:5000. Lysates/proteins: 30ug per lane. Blocking buffer: 5% non-fat dry milk in TBST. Detection: ECL Enhanced Kit. Exposure time: 120s.

### 实验步骤

访问官网浏览详情: [www.ablybio.cn](http://www.ablybio.cn)