

# GOLPH2 Rabbit mAb

货号: **AYM29312**

## 产品信息

反应	Human,Mouse,Rat
宿主	Rabbit
克隆性	Monoclonal
预测反应	
应用	WB IHC IF/ICC FC
推荐浓度	<b>WB:</b> 1:500 - 1:2000 <b>IHC:</b> 1:50 - 1:200 <b>IF/ICC:</b> 1:50 - 1:200 <b>FC:</b> 1:20 - 1:50
理论分子量	44kDa/45kDa
实测分子量	45kDa
形式	Liquid
保存条件	Store at -20°C. Avoid freeze / thaw cycles. Buffer: PBS with 0.75% BSA,50% glycerol,pH7.3.
偶联物	Unconjugated
阳性对照	HT-29,Rat heart
细胞定位	Golgi apparatus,Single-pass type II membrane protein,cis-Golgi network membrane
纯化	Affinity purification

## 抗原信息

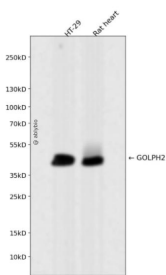
抗原信息	Recombinant fusion protein corresponding to Human GOLPH2.
序列	TGERLIRVLQDQLKTLQRNYGRLQQDVLQFQKNQTNLERKFSYDLSQCINQMKEVKEQCEERIEEVTKKGNEAVASRDLS ENNDQRQLQALSEPQPRQLQAAGLPHTVEVPQGKGNVLGNSKSQTPAPSEVVLDSCRQVEKEETNEIQVVNEEPQRDRL

## 靶点信息

研究背景	The Golgi complex plays a key role in the sorting and modification of proteins exported from the endoplasmic reticulum. The protein encoded by this gene is a type II Golgi transmembrane protein. It processes proteins synthesized in the rough endoplasmic reticulum and assists in the transport of protein cargo through the Golgi apparatus. The expression of this gene has been observed to be upregulated in response to viral infection. Alternatively spliced transcript variants encoding the same protein have been described for this gene.
------	---

基因ID	51280
基因名	GOLM1
Swiss	Q8NBJ4
别名	GOLM1;C9orf155;GOLPH2;GP73;HEL46;PSEC0257;bA379P1.3

## 产品验证



Western blot analysis of GOLPH2 expressed in HT-29,Rat heart using GOLPH2 Rabbit mAb at 1:1000. Secondary antibody: HRP Goat Anti-Rabbit IgG (H+L) at 1:5000. Lysates/proteins: 30ug per lane. Blocking buffer: 5% non-fat dry milk in TBST. Detection: ECL Enhanced Kit. Exposure time: 120s.

## 实验步骤

访问官网浏览详情: [www.ablybio.cn](http://www.ablybio.cn)