

RCHY1 Rabbit mAb

货号: **AYM29310**

产品信息

反应	Human,Mouse
宿主	Rabbit
克隆性	Monoclonal
预测反应	
应用	WB IF/ICC IP
推荐浓度	WB: 1:500 - 1:2000 IF/ICC: 1:50 - 1:200 IP: 1:20 - 1:50
理论分子量	30kDa
实测分子量	30kDa
形式	Liquid
保存条件	Store at -20°C. Avoid freeze / thaw cycles. Buffer: PBS with 0.75% BSA,50% glycerol,pH7.3.
偶联物	Unconjugated
阳性对照	HCT116
细胞定位	Cytoplasm,Nucleus,Nucleus speckle
纯化	Affinity purification

抗原信息

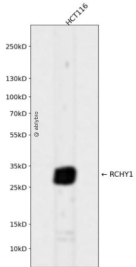
抗原信息	Recombinant fusion protein corresponding to Human RCHY1.
序列	HVLPCGHLLHRTCYEEMLKEGYRCPLCMHSALDMTRYWRQLDDEVAQTPMPSEYQNMTVDILCNCNGRSTVQFHILGM KCKICESYNTAQAGGRRISLDQQ

靶点信息

研究背景	The protein encoded by this gene has ubiquitin ligase activity. It mediates E3-dependent ubiquitination and proteasomal degradation of target proteins, including tumor protein 53, histone deacetylase 1, and cyclin-dependent kinase inhibitor 1B, thus regulating their levels and cell cycle progression. Alternatively spliced transcript variants encoding different isoforms have been described for this gene.
基因ID	25898

基因名	RCHY1
Swiss	Q96PM5
别名	RCHY1; ARNIP; CHIMP; PIRH2; PRO1996; RNF199; ZCHY; ZNF363; ring finger and CHY zinc finger domain containing 1

产品验证



Western blot analysis of RCHY1 expressed in HCT116 using RCHY1 Rabbit mAb at 1:1000. Secondary anti body: HRP Goat Anti-Rabbit IgG (H+L) at 1:5000. Lysates/proteins: 30ug per lane. Blocking buffer: 5% no n-fat dry milk in TBST. Detection: ECL Enhanced Kit. Exposure time: 120s.

实验步骤

访问官网浏览详情: www.ablybio.cn