

# Cyclin D1 Rabbit mAb

货号: **AYM29307**

## 产品信息

反应	Human,Mouse,Rat
宿主	Rabbit
克隆性	Monoclonal
预测反应	
应用	<a href="#">WB</a> <a href="#">IHC</a> <a href="#">IF/ICC</a> <a href="#">IP</a>
推荐浓度	<b>WB:</b> 1:500 - 1:2000 <b>IHC:</b> 1:50 - 1:200 <b>IF/ICC:</b> 1:50 - 1:200 <b>IP:</b> 1:20 - 1:50
理论分子量	34kDa
实测分子量	34kDa
形式	Liquid
保存条件	Store at -20°C. Avoid freeze / thaw cycles. Buffer: PBS with 0.75% BSA,50% glycerol,pH7.3.
偶联物	Unconjugated
阳性对照	HepG2,MCF7,Mouse lung,HeLa
细胞定位	Cytoplasm,Membrane,Nucleus
纯化	Affinity purification

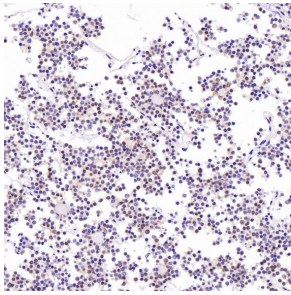
## 抗原信息

抗原信息	Recombinant fusion protein corresponding to Human Cyclin D1.
序列	ISNPPSMVAAGSVVAAVQGLNLRSPNNFLSYRRLTRFLSRVIKCDPDCLRACQEIQIEALLESSLRQAQQNMDPKAAEEEEEE EEEVDLACTPTDVRDVDI

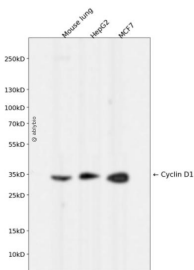
## 靶点信息

研究背景	The protein encoded by this gene belongs to the highly conserved cyclin family, whose members are characterized by a dramatic periodicity in protein abundance throughout the cell cycle. Cyclins function as regulators of CDK kinases. Different cyclins exhibit distinct expression and degradation patterns which contribute to the temporal coordination of each mitotic event. This cyclin forms a complex with and functions as a regulatory subunit of CDK4 or CDK6, whose activity is required for cell cycle G1/S transition. This protein has been shown to interact with tumor suppressor protein Rb and the expression of this gene is regulated positively by Rb. Mutations, amplification and overexpression of this gene, which alters cell cycle progression, are observed frequently in a variety of tumors and may contribute to tumorigenesis. [provided by RefSeq, Jul 2008]
基因ID	595
基因名	CCND1
Swiss	P24385
别名	BCL1;D11S287E;PRAD1;U21B31;CCND1;Cyclin D1;cyclin D1

## 产品验证



Immunohistochemical analysis of paraffin-embedded Human pituitary tumor, using the Antibody at 1:100 dilution.



Western blot analysis of Cyclin D1 expressed in Mouse lung, HepG2, MCF7 using Cyclin D1 Rabbit mAb at 1:1000. Secondary antibody: HRP Goat Anti-Rabbit IgG (H+L) at 1:5000. Lysates/proteins: 30ug per lane. Blocking buffer: 5% non-fat dry milk in TBST. Detection: ECL Enhanced Kit. Exposure time: 120s.

## 实验步骤

访问官网浏览详情: [www.ablybio.cn](http://www.ablybio.cn)