

Gemin 2 Rabbit mAb

货号: **AYM29300**

产品信息

反应	Human,Mouse,Rat
宿主	Rabbit
克隆性	Monoclonal
预测反应	
应用	WB IP
推荐浓度	WB: 1:500 - 1:2000 IP: 1:20 - 1:50
理论分子量	4kDa/28kDa/29kDa/31kDa
实测分子量	31kDa
形式	Liquid
保存条件	Store at -20°C. Avoid freeze / thaw cycles. Buffer: PBS with 0.75% BSA,50% glycerol,pH7.3.
偶联物	Unconjugated
阳性对照	Jurkat
细胞定位	Cytoplasm,Nucleus,gem
纯化	Affinity purification

抗原信息

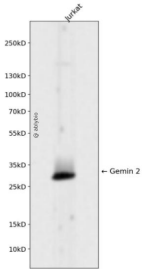
抗原信息	Recombinant fusion protein corresponding to Human Gemin 2.
序列	NWFGERDFTPELGRWLYALLACLEKPLLPEAHSLIRQLARRCSEVRLLVDSKDDERVPALNLLICLVSRYFDQRDLADEPS

靶点信息

研究背景	This gene encodes one of the proteins found in the SMN complex, which consists of several gemin proteins and the protein known as the survival of motor neuron protein. The SMN complex is localized to a subnuclear compartment called gems (gemini of coiled bodies) and is required for assembly of spliceosomal snRNPs and for pre-mRNA splicing. This protein interacts directly with the survival of motor neuron protein and it is required for formation of the SMN complex. A knockout mouse targeting the mouse homolog of this gene exhibited disrupted snRNP assembly and motor neuron degeneration.
基因ID	8487

基因名	GEMIN2
Swiss	O14893
别名	GEMIN2;SIP1;SIP1-delta

产品验证



Western blot analysis of Gemin 2 expressed in Jurkat using Gemin 2 Rabbit mAb at 1:1000. Secondary antibody: HRP Goat Anti-Rabbit IgG (H+L) at 1:5000. Lysates/proteins: 30ug per lane. Blocking buffer: 5% non-fat dry milk in TBST. Detection: ECL Enhanced Kit. Exposure time: 120s.

实验步骤

访问官网浏览详情: www.ablybio.cn