

# Clusterin Rabbit mAb

货号: **AYM29296**

## 产品信息

|       |   |
|-------|---|
| 反应    | Human,Mouse   |
| 宿主    | Rabbit  |
| 克隆性   | Monoclonal  |
| 预测反应  |   |
| 应用    | WB IHC  |
| 推荐浓度  | <b>WB:</b> 1:500 - 1:2000<br><b>IHC:</b> 1:50 - 1:200   |
| 理论分子量 | 32kDa/48kDa/52kDa/53kDa/57kDa   |
| 实测分子量 | 32-42, 65, 75kDa  |
| 形式    | Liquid  |
| 保存条件  | Store at -20°C. Avoid freeze / thaw cycles.<br>Buffer: PBS with 0.75% BSA,50% glycerol,pH7.3.   |
| 偶联物   | Unconjugated  |
| 阳性对照  | Human plasma,K-562,Mouse plasma   |
| 细胞定位  | Cytoplasm,Cytoplasmic side,Cytoplasmic vesicle,Endoplasmic reticulum,Microsome,Mitochondrion membrane,Nucleus,Peripheral membrane protein,Secreted,chromaffin granule,cytosol,secretory vesicle |
| 纯化    | Affinity purification   |

## 抗原信息

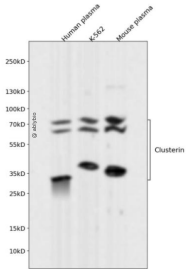
|      |  |
|------|--|
| 抗原信息 | Recombinant fusion protein corresponding to Human Clusterin.   |
| 序列   | STNNPSQAKLRRELDLQVAERLTRKYNELLKSYQWKMLNTSSLLEQLNEQFNWVSRLANLTQGEDQYYLRVTTVASHTSDSDVPSGVTEVVVVKLFDSDPITVTPVEVSRKNPKFMETVAEKALQEYRKKHREE |

## 靶点信息

|      |  |
|------|--|
| 研究背景 | The protein encoded by this gene is a secreted chaperone that can under some stress conditions also be found in the cell cytosol. It has been suggested to be involved in several basic biological events such as cell death, tumor progression, and neurodegenerative disorders. Alternate splicing results in both coding and non-coding variants. |
| 基因ID | 1191   |

|       |  |
|-------|--|
| 基因名   | CLU  |
| Swiss | P10909   |
| 别名    | CLU;AAG4;APO-J;APOJ;CLI;CLU1;CLU2;KUB1;NA1/NA2;SGP-2;SGP2;SP-40;TRPM-2;TRPM2;clusterin |

## 产品验证



Western blot analysis of Clusterin expressed in Human plasma, K-562, Mouse plasma using Clusterin Rabbit mAb at 1:1000. Secondary antibody: HRP Goat Anti-Rabbit IgG (H+L) at 1:5000. Lysates/proteins: 30ug per lane. Blocking buffer: 5% non-fat dry milk in TBST. Detection: ECL Enhanced Kit. Exposure time: 120s.

## 实验步骤

访问官网浏览详情: [www.ablybio.cn](http://www.ablybio.cn)