

Calsequestrin 1 Rabbit mAb

货号: **AYM29291**

产品信息

反应	Human,Mouse,Rat
宿主	Rabbit
克隆性	Monoclonal
预测反应	
应用	WB IHC FC
推荐浓度	WB: 1:500 - 1:2000 IHC: 1:50 - 1:200 FC: 1:20 - 1:50
理论分子量	63kDa
实测分子量	63kDa
形式	Liquid
保存条件	Store at -20°C. Avoid freeze / thaw cycles. Buffer: PBS with 0.75% BSA,50% glycerol,pH7.3.
偶联物	Unconjugated
阳性对照	Rat heart
细胞定位	endoplasmic reticulum,mitochondrial matrix,mitochondrion,sarcoplasmic reticulum,sarcoplasmic reticulum lumen,smooth endoplasmic reticulum,T-tubule,terminal cisterna lumen,Z disc
纯化	Affinity purification

抗原信息

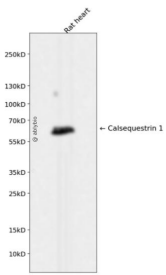
抗原信息	Recombinant fusion protein corresponding to Human Calsequestrin 1.
序列	EDKGVGFGLVDSEKDAAVAKKLGTEVDSMYVFKGDEVIEYDGEFSADTIVEFLLDVLEDPVELIEGERELQAFENIEDEIKLIGYFKSKDSEHYKAFEDA

靶点信息

研究背景	This gene encodes the skeletal muscle specific member of the calsequestrin protein family. Calsequestrin functions as a luminal sarcoplasmic reticulum calcium sensor in both cardiac and skeletal muscle cells. This protein, also known as calmitine, functions as a calcium regulator in the mitochondria of skeletal muscle. This protein is absent in patients with Duchenne and Becker types of muscular dystrophy. [provided by RefSeq, Jun 2013]
------	--

基因ID	844
基因名	CASQ1
Swiss	P31415
别名	CASQ; PDIB1; VMCQA

产品验证



Western blot analysis of Calsequestrin 1 expressed in Rat heart using Calsequestrin 1 Rabbit mAb at 1:10 00. Secondary antibody: HRP Goat Anti-Rabbit IgG (H+L) at 1:5000. Lysates/proteins: 30ug per lane. Blocking buffer: 5% non-fat dry milk in TBST. Detection: ECL Enhanced Kit. Exposure time: 120s.

实验步骤

访问官网浏览详情: www.ablybio.cn