

Integrin beta 4 Rabbit mAb

货号: **AYM29290**

产品信息

反应	Human,Mouse
宿主	Rabbit
克隆性	Monoclonal
预测反应	
应用	WB IHC
推荐浓度	WB: 1:500 - 1:2000 IHC: 1:50 - 1:200
理论分子量	106kDa/194kDa/195kDa/200kDa/202kDa
实测分子量	210kDa
形式	Liquid
保存条件	Store at -20°C. Avoid freeze / thaw cycles. Buffer: PBS with 0.75% BSA,50% glycerol,pH7.3.
偶联物	Unconjugated
阳性对照	HeLa
细胞定位	Cell junction,Cell membrane,Lipid-anchor,Single-pass type I membrane protein,hemidesmosome
纯化	Affinity purification

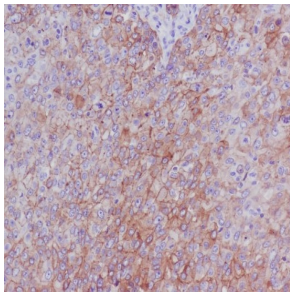
抗原信息

抗原信息	Recombinant fusion protein corresponding to Human Integrin beta 4 .
序列	NRCKKAPVKSCTECVRVDKCAYCTDEMFRDRRCNTQAELLAAGCQRESIVMESSFQITEETQIDTTLRRSQMSPQGLR VRLRPGEERHFELEVFEPLSPVDLYILMDFSNSMSDDLNLKMGQNLARVLSQLTSDYTIGFGKFVDKVSVPQTDMP EKLKEPWPNSDPPFSFKNVISLTEDVDEFRNKLQGERISGNLDAPEGGFDAILQTAVCTRDIGWRPDSTHLLVFSTESAFH YEADGANVLAGIMSRNDERCHLDTTGTYTQYRTQDYPSVPTL

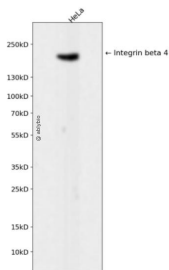
靶点信息

研究背景	Integrins are heterodimers comprised of alpha and beta subunits, that are noncovalently associated trans membrane glycoprotein receptors. Different combinations of alpha and beta polypeptides form complexes that vary in their ligand-binding specificities. Integrins mediate cell-matrix or cell-cell adhesion, and transduced signals that regulate gene expression and cell growth. This gene encodes the integrin beta 4 subunit, a receptor for the laminins. This subunit tends to associate with alpha 6 subunit and is likely to play a pivotal role in the biology of invasive carcinoma. Mutations in this gene are associated with epidermolysis bullosa with pyloric atresia. Multiple alternatively spliced transcript variants encoding distinct isoforms have been found for this gene.
基因ID	3691
基因名	ITGB4
Swiss	P16144
别名	ITGB4;CD104;GP150

产品验证



Immunohistochemical analysis of paraffin-embedded human breast cancer, using Integrin beta 4 Antibody.



Western blot analysis of Integrin beta 4 expressed in HeLa using Integrin beta 4 Rabbit mAb at 1:1000. Secondary antibody: HRP Goat Anti-Rabbit IgG (H+L) at 1:5000. Lysates/proteins: 30ug per lane. Blocking buffer: 5% non-fat dry milk in TBST. Detection: ECL Enhanced Kit. Exposure time: 120s.

实验步骤

访问官网浏览详情: www.ablybio.cn