

Retinoblastoma Rabbit mAb

货号: **AYM29288**

产品信息

反应	Human,Mouse
宿主	Rabbit
克隆性	Monoclonal
预测反应	
应用	WB IHC IF/ICC IP
推荐浓度	WB: 1:500 - 1:2000 IHC: 1:50 - 1:200 IF/ICC: 1:50 - 1:200 IP: 1:20 - 1:50
理论分子量	106kDa
实测分子量	105kDa
形式	Liquid
保存条件	Store at -20°C. Avoid freeze / thaw cycles. Buffer: PBS with 0.75% BSA,50% glycerol,pH7.3.
偶联物	Unconjugated
阳性对照	HeLa,A-431
细胞定位	Nucleus
纯化	Affinity purification

抗原信息

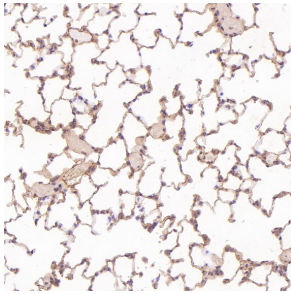
抗原信息	Recombinant fusion protein corresponding to Human Retinoblastoma.
序列	RSTSQNLDSGTDLSFPWILNVLNLKAFDFYKVIKESFIKAEGNLTREMIKHLERCEHRIMESLAWLSDSPLFDLIKQSKDREGP TDHLESACPLNPLQNNH

靶点信息

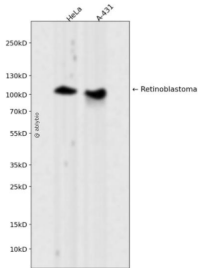
研究背景	The protein encoded by this gene is a negative regulator of the cell cycle and was the first tumor suppressor gene found. The encoded protein also stabilizes constitutive heterochromatin to maintain the overall chromatin structure. The active, hypophosphorylated form of the protein binds transcription factor E2F1. Defects in this gene are a cause of childhood cancer retinoblastoma (RB), bladder cancer, and osteogenic sarcoma.
------	---

基因ID	5925
基因名	RB1
Swiss	P06400
别名	OSRC;PPP1R130;RB;p105-Rb;pRb;pp110;RB1;Rb

产品验证



Immunohistochemical analysis of paraffin-embedded Rat lung, using the Antibody at 1:250 dilution.



Western blot analysis of Retinoblastoma expressed in HeLa,A-431 using Retinoblastoma Rabbit mAb at 1:1000. Secondary antibody: HRP Goat Anti-Rabbit IgG (H+L) at 1:5000. Lysates/proteins: 30ug per lane. Blocking buffer: 5% non-fat dry milk in TBST. Detection: ECL Enhanced Kit. Exposure time: 120s.

实验步骤

访问官网浏览详情: www.ablybio.cn