

EDG1 Rabbit mAb

货号: **AYM29283**

产品信息

反应	Human,Mouse,Rat
宿主	Rabbit
克隆性	Monoclonal
预测反应	
应用	WB
推荐浓度	WB: 1:500 - 1:2000
理论分子量	43kDa
实测分子量	43kDa
形式	Liquid
保存条件	Store at -20°C. Avoid freeze / thaw cycles. Buffer: PBS with 0.75% BSA,50% glycerol,pH7.3.
偶联物	Unconjugated
阳性对照	BxPC-3,A375,HUVEC,Mouse lung,Mouse brain,Mouse spleen,Rat lung,Rat heart
细胞定位	Cell membrane,Endosome,Membrane raft,Multi-pass membrane protein
纯化	Affinity purification

抗原信息

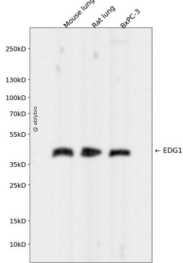
抗原信息	Recombinant fusion protein corresponding to Human EDG1.
序列	MGPTSVPLVKAHRSSVSDYVNYDIIVRHNYTGKLNISADKENSIKLTSVVFILICCFIILENIFVLLTIWTKKFFHRPMYYFIGN LALSDLLAGVAYTA

靶点信息

研究背景	The protein encoded by this gene is structurally similar to G protein-coupled receptors and is highly expressed in endothelial cells. It binds the ligand sphingosine-1-phosphate with high affinity and high specificity, and suggested to be involved in the processes that regulate the differentiation of endothelial cells. Activation of this receptor induces cell-cell adhesion. Alternative splicing results in multiple transcript variants. [provided by RefSeq, Mar 2016]
基因ID	1901

基因名	S1PR1
Swiss	P21453
别名	CD363; CHEDG1; D1S3362; ECGF1; EDG-1; EDG1; S1P1

产品验证



Western blot analysis of EDG1 expressed in Mouse lung,Rat lung,BxPC-3 using EDG1 Rabbit mAb at 1:1 000. Secondary antibody: HRP Goat Anti-Rabbit IgG (H+L) at 1:5000. Lysates/proteins: 30ug per lane. B locking buffer: 5% non-fat dry milk in TBST. Detection: ECL Enhanced Kit. Exposure time: 120s.

实验步骤

访问官网浏览详情: www.ablybio.cn