

# Integrin alpha 6 Rabbit mAb

货号: **AYM29278**

## 产品信息

反应	Human,Mouse,Rat
宿主	Rabbit
克隆性	Monoclonal
预测反应	
应用	WB IHC
推荐浓度	<b>WB:</b> 1:500 - 1:2000 <b>IHC:</b> 1:50 - 1:200
理论分子量	127kDa
实测分子量	127kDa
形式	Liquid
保存条件	Store at -20°C. Avoid freeze / thaw cycles. Buffer: PBS with 0.75% BSA,50% glycerol,pH7.3.
偶联物	Unconjugated
阳性对照	A-431
细胞定位	Cell membrane,Lipid-anchor,Single-pass type I membrane protein
纯化	Affinity purification

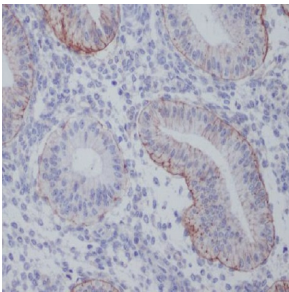
## 抗原信息

抗原信息	Recombinant fusion protein corresponding to Human Integrin alpha 6.
序列	IDLRQKTACGAPSGICLQVKSCFEYTNAPAGYNPSISIVGTLEAEKERRKSGLSSRVQFRNQGSEPKYTQELTLKRQKQKVC MEETLWLQDNIRDKLRPIPIASVEIQEP

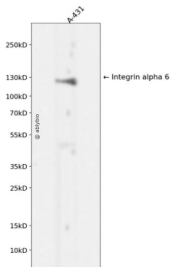
## 靶点信息

研究背景	The gene encodes a member of the integrin alpha chain family of proteins. Integrins are heterodimeric integral membrane proteins composed of an alpha chain and a beta chain that function in cell surface adhesion and signaling. The encoded preproprotein is proteolytically processed to generate light and heavy chains that comprise the alpha 6 subunit. This subunit may associate with a beta 1 or beta 4 subunit to form an integrin that interacts with extracellular matrix proteins including members of the laminin family. The alpha 6 beta 4 integrin may promote tumorigenesis, while the alpha 6 beta 1 integrin may negatively regulate erbB2/HER2 signaling. Alternative splicing results in multiple transcript variants. [provided by RefSeq, Oct 2015]
基因ID	3655
基因名	ITGA6
Swiss	P23229
别名	CD49f;ITGA6B;VLA-6;Integrin alpha 6;ITGA6

## 产品验证



Immunohistochemical analysis of paraffin-embedded human uterus, using Integrin alpha 6 Antibody.



Western blot analysis of Integrin alpha 6 expressed in A-431 using Integrin alpha 6 Rabbit mAb at 1:1000. Secondary antibody: HRP Goat Anti-Rabbit IgG (H+L) at 1:5000. Lysates/proteins: 30 ug per lane. Blocking buffer: 5% non-fat dry milk in TBST. Detection: ECL Enhanced Kit. Exposure time: 120s.

## 实验步骤

访问官网浏览详情: [www.ablybio.cn](http://www.ablybio.cn)