

MCL1 Rabbit mAb

货号: **AYM29257**

产品信息

反应	Human,Mouse,Rat
宿主	Rabbit
克隆性	Monoclonal
预测反应	
应用	WB IHC IF/ICC IP FC
推荐浓度	WB: 1:500 - 1:2000 IHC: 1:50 - 1:200 IF/ICC: 1:50 - 1:200 IP: 1:20 - 1:50 FC: 1:20 - 1:50
理论分子量	28kDa/37kDa
实测分子量	37kDa
形式	Liquid
保存条件	Store at -20°C. Avoid freeze / thaw cycles. Buffer: PBS with 0.75% BSA,50% glycerol,pH7.3.
偶联物	Unconjugated
阳性对照	Mouse testis
细胞定位	Cytoplasm,Membrane,Mitochondrion,Nucleus,Single-pass membrane protein,nucleoplasm
纯化	Affinity purification

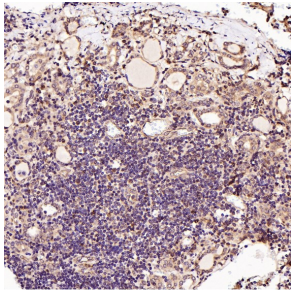
抗原信息

抗原信息	Recombinant fusion protein corresponding to Human MCL1.
序列	MFGLKRNAVIGLNLVYCGGAGLGAGSGGATRPGGRLLATEKEASARREIGGGEAGAVIGGSAGASPPSTLTPDSRRVARPP PIGAEVPDVTATPARLLFFAPTRRAAPLEEMEAPAADAIMSPEEELDGYEPEPLGKRPAVLPLLELVGESGNNSTDGS LPST PPPAEEEEDELYRQSLEIISRYLREQATGAKDTKPMGRSGATSRKALET LRRVGDGVQRNHETAFQGMLRKLDIKNEDDVK SLSRVMIHVFSDGVTNWGRIVTLISFGAFVAKHLKTINQESCIEPLAESITDVLVVRTKRDWLVKQRGWDGDFVEFFHVEDLE GG

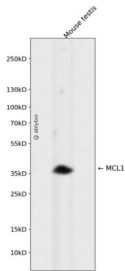
靶点信息

研究背景	This gene encodes an anti-apoptotic protein, which is a member of the Bcl-2 family. Alternative splicing results in multiple transcript variants. The longest gene product (isoform 1) enhances cell survival by inhibiting apoptosis while the alternatively spliced shorter gene products (isoform 2 and isoform 3) promote apoptosis and are death-inducing.
基因ID	4170
基因名	MCL1
Swiss	Q07820
别名	MCL1;BCL2L3;EAT;MCL1-ES;MCL1L;MCL1S;Mcl-1;TM;bcl2-L-3;mcl1/EAT;MCL1

产品验证



Immunohistochemical analysis of paraffin-embedded Human thyroid cancer, using the Antibody at 1:100 dilution.



Western blot analysis of MCL1 expressed in Mouse testis using MCL1 Rabbit mAb at 1:1000. Secondary antibody: HRP Goat Anti-Rabbit IgG (H+L) at 1:5000. Lysates/proteins: 30ug per lane. Blocking buffer: 5% non-fat dry milk in TBST. Detection: ECL Enhanced Kit. Exposure time: 120s

实验步骤

访问官网浏览详情: www.ablybio.cn