

TRPM8 Rabbit mAb

货号: **AYM29246**

产品信息

反应	Human,Mouse
宿主	Rabbit
克隆性	Monoclonal
预测反应	
应用	WB ICC
推荐浓度	WB: 1:500 - 1:2000 ICC: 1:50 - 1:200
理论分子量	128kDa
实测分子量	128kDa
形式	Liquid
保存条件	Store at -20°C. Avoid freeze / thaw cycles. Buffer: PBS with 0.75% BSA,50% glycerol,pH7.3.
偶联物	Unconjugated
阳性对照	PC-3,MCF7
细胞定位	Cell membrane,Endoplasmic reticulum membrane,Membrane raft,Multi-pass membrane protein
纯化	Affinity purification

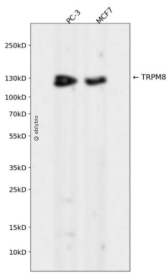
抗原信息

抗原信息	Recombinant fusion protein corresponding to Human TRPM8 .
序列	FRSVIYEPYLAMFGQVPSDVGTTYDFAHCTFTGNESKPLCVELDEHNLPRFPEWITIPLVCIYMLSTNILLVNULLVAMFGYT VGTVQENNDQVWKFQRYF

靶点信息

研究背景	Receptor-activated non-selective cation channel involved in detection of sensations such as coolness, by being activated by cold temperature below 25 degrees Celsius. Activated by icilin, eucalyptol, menthol, cold and modulation of intracellular pH. Involved in menthol sensation. Permeable for monovalent cations sodium, potassium, and cesium and divalent cation calcium. Temperature sensing is tightly linked to voltage-dependent gating. Activated upon depolarization, changes in temperature resulting in graded shifts of its voltage-dependent activation curves. The chemical agonist menthol functions as a gating modifier, shifting activation curves towards physiological membrane potentials. Temperature sensitivity arises from a tenfold difference in the activation energies associated with voltage-dependent opening and closing. In prostate cancer cells, shows strong inward rectification and high calcium selectivity in contrast to its behavior in normal cells which is characterized by outward rectification and poor cationic selectivity. Plays a role in prostate cancer cell migration. Isoform 2 and isoform 3 negatively regulate menthol- and cold-induced channel activity by stabilizing the closed state of the channel.
基因ID	79054
基因名	TRPM8
Swiss	Q7Z2W7
别名	LTRPC6; TRPP8

产品验证



Western blot analysis of TRPM8 expressed in PC-3, MCF7 using TRPM8 Rabbit mAb at 1:1000. Secondary antibody: HRP Goat Anti-Rabbit IgG (H+L) at 1:5000. Lysates/proteins: 30ug per lane. Blocking buffer: 5 % non-fat dry milk in TBST. Detection: ECL Enhanced Kit. Exposure time: 120s.

实验步骤

访问官网浏览详情: www.ablybio.cn