

E2F2 Rabbit mAb

货号: **AYM29236**

产品信息

反应	Human,Mouse,Rat
宿主	Rabbit
克隆性	Monoclonal
预测反应	
应用	WB FC
推荐浓度	WB: 1:500 - 1:2000 FC: 1:20 - 1:50
理论分子量	47kDa
实测分子量	47kDa
形式	Liquid
保存条件	Store at -20°C. Avoid freeze / thaw cycles. Buffer: PBS with 0.75% BSA,50% glycerol,pH7.3.
偶联物	Unconjugated
阳性对照	HeLa,SH-SY5Y,Mouse lung,Mouse thymus
细胞定位	Nucleus
纯化	Affinity purification

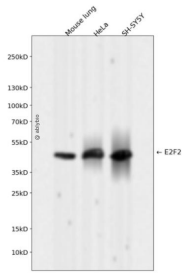
抗原信息

抗原信息	Recombinant fusion protein corresponding to Human E2F2.
序列	CPEEVQEPDSPSEELPSTSTLCPSDSAQSSSTDPSIMEPTASSVPAPAPTPQQAPPPSLVPLEATDSLLELPHPLLQQT EDQFLSPTLA

靶点信息

研究背景	The protein encoded by this gene is a member of the E2F family of transcription factors. The E2F family plays a crucial role in the control of cell cycle and action of tumor suppressor proteins and is also a target of the transforming proteins of small DNA tumor viruses. The E2F proteins contain several evolutionally conserved domains found in most members of the family. These domains include a DNA binding domain, a dimerization domain which determines interaction with the differentiation regulated transcription factor proteins (DP), a transactivation domain enriched in acidic amino acids, and a tumor suppressor protein association domain which is embedded within the transactivation domain. This protein and another 2 members, E2F1 and E2F3, have an additional cyclin binding domain. This protein binds specifically to retinoblastoma protein pRB in a cell-cycle dependent manner, and it exhibits overall 46% amino acid identity to E2F1. [provided by RefSeq, Jul 2008]
基因ID	1870
基因名	E2F2
Swiss	Q14209
别名	E2F-2

产品验证



Western blot analysis of E2F2 expressed in Mouse lung, HeLa, SH-SY5Y using E2F2 Rabbit mAb at 1:1000. Secondary antibody: HRP Goat Anti-Rabbit IgG (H+L) at 1:5000. Lysates/proteins: 30ug per lane. Blocking buffer: 5% non-fat dry milk in TBST. Detection: ECL Enhanced Kit. Exposure time: 120s.

实验步骤

访问官网浏览详情: www.ablybio.cn