

EEF2 Rabbit mAb

货号: **AYM29233**

产品信息

反应	Human,Mouse,Rat
宿主	Rabbit
克隆性	Monoclonal
预测反应	
应用	WB IHC IF/ICC IP FC
推荐浓度	WB: 1:500 - 1:2000 IHC: 1:50 - 1:200 IF/ICC: 1:50 - 1:200 IP: 1:20 - 1:50 FC: 1:20 - 1:50
理论分子量	95kDa
实测分子量	95kDa
形式	Liquid
保存条件	Store at -20°C. Avoid freeze / thaw cycles. Buffer: PBS with 0.75% BSA,50% glycerol,pH7.3.
偶联物	Unconjugated
阳性对照	HeLa,NCI-H460,293T
细胞定位	Cytoplasm,Nucleus
纯化	Affinity purification

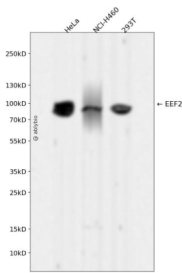
抗原信息

抗原信息	Recombinant fusion protein corresponding to Human EEF2 .
序列	MVNFTVDQIRAIMDKKANIRNMSVIAHVDHKGSTLTDSLVCAGIIASARAGETRFTDTRKDEQERCITIKSTAISLFYELSEN DLNFIKQSKDGAGFLINLIDSPGHVDFSSEVTAALRVTDGALVVVDCVSGVCVQTETVLRQAI AERIKPVLMMNKMDRALL ELQLEPEELYQTFQRIVENVNVIIISTYGEGESGPMGNIMIDPVLGTVGFGSGLHGWAFTLTKQFAEMYVAKFAAKGEGQLGP AERAKKVEDMMKKLWGDYRFPANGKFSKSATSPEGKLLPRTFC

靶点信息

研究背景	This gene encodes a member of the GTP-binding translation elongation factor family. This protein is an essential factor for protein synthesis. It promotes the GTP-dependent translocation of the nascent protein chain from the A-site to the P-site of the ribosome. This protein is completely inactivated by EF-2 kinase phosphorylation.
基因ID	1938
基因名	EEF2
Swiss	P13639
别名	EEF2;EEF-2;EF-2;EF2;SCA26

产品验证



Western blot analysis of EEF2 expressed in HeLa, NCI-H460, 293T using EEF2 Rabbit mAb at 1:1000. Secondary antibody: HRP Goat Anti-Rabbit IgG (H+L) at 1:5000. Lysates/proteins: 30ug per lane. Blocking buffer: 5% non-fat dry milk in TBST. Detection: ECL Enhanced Kit. Exposure time: 120s.

实验步骤

访问官网浏览详情: www.ablybio.cn