

Hsp60 Rabbit mAb

货号: **AYM29221**

产品信息

反应	Human,Mouse,Rat
宿主	Rabbit
克隆性	Monoclonal
预测反应	
应用	WB IHC
推荐浓度	WB: 1:500 - 1:2000 IHC: 1:50 - 1:200
理论分子量	17kDa/61kDa
实测分子量	60kDa
形式	Liquid
保存条件	Store at -20°C. Avoid freeze / thaw cycles. Buffer: PBS with 0.75% BSA,50% glycerol,pH7.3.
偶联物	Unconjugated
阳性对照	HeLa,Jurkat,K-562,Mouse kidney,Mouse liver,Mouse thymus,Rat heart
细胞定位	Mitochondrion matrix
纯化	Affinity purification

抗原信息

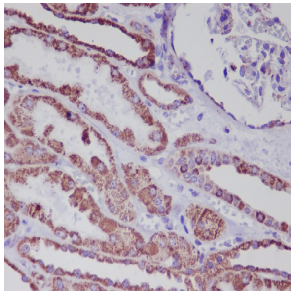
抗原信息	Recombinant fusion protein corresponding to Human Hsp60 .
序列	AKDVKFGADARALMLQGVDLLADAVAVTMGPKGRTVIIIEQSWGSPKVTKDGVTVAKSIDLKDKYKNIGAKLVQDVANNT NEEAGDGTTTATVLARSLIAKEGFEKISKGANPVEIRRGVMLAVDAVIAELKKQSKPVTTPEEIAQVATISANGDKEIGNIISDA MKKVGGRKGVITVKDGKTLNDELEIIEGMKFD RGYISPYFINTSKGQKCEFQ

靶点信息

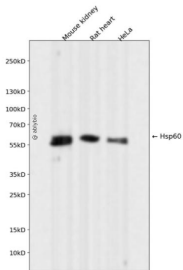
研究背景	This gene encodes a member of the chaperonin family. The encoded mitochondrial protein may function as a signaling molecule in the innate immune system. This protein is essential for the folding and assembly of newly imported proteins in the mitochondria. This gene is adjacent to a related family member and the region between the 2 genes functions as a bidirectional promoter. Several pseudogenes have been associated with this gene. Two transcript variants encoding the same protein have been identified for this gene. Mutations associated with this gene cause autosomal recessive spastic paraplegia 13.
------	--

基因ID	3329
基因名	HSPD1
Swiss	P10809
别名	HSPD1;CPN60;GROEL;HLD4;HSP-60;HSP60;HSP65;HuCHA60;SPG13;Hsp60

产品验证



Immunohistochemical analysis of paraffin-embedded human kidney, using Hsp60 Antibody .



Western blot analysis of Hsp60 expressed in Mouse kidney,Rat heart,HeLa using Hsp60 Rabbit mAb at 1:1000. Secondary antibody: HRP Goat Anti-Rabbit IgG (H+L) at 1:5000. Lysates/proteins: 30ug per lane. Blocking buffer: 5% non-fat dry milk in TBST. Detection: ECL Enhanced Kit. Exposure time: 120s.

实验步骤

访问官网浏览详情: www.ablybio.cn