

Hemoglobin subunit alpha Rabbit mAb

货号: **AYM29218**

产品信息

反应	Human,Mouse,Rat
宿主	Rabbit
克隆性	Monoclonal
预测反应	
应用	WB IHC IP FC
推荐浓度	WB: 1:500 - 1:2000 IHC: 1:50 - 1:200 IP: 1:20 - 1:50 FC: 1:20 - 1:50
理论分子量	15kDa
实测分子量	15kDa
形式	Liquid
保存条件	Store at -20°C. Avoid freeze / thaw cycles. Buffer: PBS with 0.75% BSA,50% glycerol,pH7.3.
偶联物	Unconjugated
阳性对照	MCF7,Mouse liver,Mouse blood cells,Rat liver,Rat blood cells
细胞定位	blood microparticle,cytosol,extracellular exosome,extracellular region,extracellular space,hemoglobin complex
纯化	Affinity purification

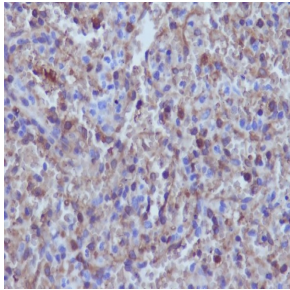
抗原信息

抗原信息	Recombinant fusion protein corresponding to Human Hemoglobin subunit alpha.
序列	MVLSPADKTNVKAAWGKVGAGHAGEYGAEALERMFLSFPTTKTYFPHFDLSHGSAQVKGHGKKVADALTNAVAHVDDMPNALSALSDLHAHKLKRVDPVNFKLLSHCLLVTLAAHLPAEFTPAVHASLDKFLASVSTVLTISKYR

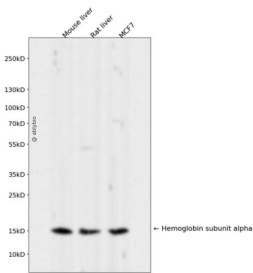
靶点信息

研究背景	The human alpha globin gene cluster located on chromosome 16 spans about 30 kb and includes seven loci: 5'- zeta - pseudozeta - mu - pseudoalpha-1 - alpha-2 - alpha-1 - theta - 3'. The alpha-2 (HBA2) and alpha-1 (HBA1) coding sequences are identical. These genes differ slightly over the 5' untranslated regions and the introns, but they differ significantly over the 3' untranslated regions. Two alpha chains plus two beta chains constitute HbA, which in normal adult life comprises about 97% of the total hemoglobin; alpha chains combine with delta chains to constitute HbA-2, which with HbF (fetal hemoglobin) makes up the remaining 3% of adult hemoglobin. Alpha thalassemias result from deletions of each of the alpha genes as well as deletions of both HBA2 and HBA1; some nondeletion alpha thalassemias have also been reported.
基因ID	3039
基因名	
Swiss	P69905
别名	HBA1;HBA-T3;HBH

产品验证



Immunohistochemical analysis of paraffin-embedded human spleen, using hemoglobin subunit alpha Antibody.



Western blot analysis of Hemoglobin subunit alpha expressed in Mouse liver,Rat liver,MCF7 using Hemoglobin subunit alpha Rabbit mAb at 1:1000. Secondary antibody: HRP Goat Anti-Rabbit IgG (H+L) at 1:5000. Lysates/proteins: 30ug per lane. Blocking buffer: 5% non-fat dry milk in T BST. Detection: ECL Enhanced Kit. Exposure time: 120s.

实验步骤

访问官网浏览详情: www.ablybio.cn