

PEN2 Rabbit mAb

货号: **AYM29216**

产品信息

反应	Human,Mouse,Rat
宿主	Rabbit
克隆性	Monoclonal
预测反应	
应用	WB IHC IF/ICC FC
推荐浓度	WB: 1:500 - 1:2000 IHC: 1:50 - 1:200 IF/ICC: 1:50 - 1:200 FC: 1:20 - 1:50
理论分子量	12kDa
实测分子量	13kDa
形式	Liquid
保存条件	Store at -20°C. Avoid freeze / thaw cycles. Buffer: PBS with 0.75% BSA,50% glycerol,pH7.3.
偶联物	Unconjugated
阳性对照	Mouse spleen
细胞定位	Endoplasmic reticulum membrane,Golgi apparatus,Golgi stack membrane,Multi-pass membrane protein
纯化	Affinity purification

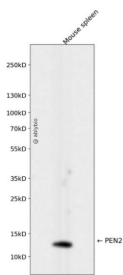
抗原信息

抗原信息	Recombinant fusion protein corresponding to Human PEN2.
序列	MNLERVSNEEKLNLCRKYYLGGFAFLPFLWLVNIFWFFREAFVLPAYTEQSQIKGYVWRSVAVGFLFWVIVLTSWITIFQIYRP RWGALGDYLSFTIPLGTP

靶点信息

研究背景	Presenilins, which are components of the gamma-secretase protein complex, are required for intramembraneous processing of some type I transmembrane proteins, such as the Notch proteins and the beta-amyloid precursor protein. Signaling by Notch receptors mediates a wide range of developmental cell fates. Processing of the beta-amyloid precursor protein generates neurotoxic amyloid beta peptides, the major component of senile plaques associated with Alzheimer's disease. This gene encodes a protein that is required for Notch pathway signaling, and for the activity and accumulation of gamma-secretase. Mutations resulting in haploinsufficiency for this gene cause familial acne inversa-2 (ACNINV2). Alternative splicing results in multiple transcript variants.
基因ID	55851
基因名	PSENEN
Swiss	Q9NZ42
别名	PSENEN;MDS033;MSTP064;PEN-2;PEN2

产品验证



Western blot analysis of PEN2 expressed in Mouse spleen using PEN2 Rabbit mAb at 1:1000. Secondary antibody: HRP Goat Anti-Rabbit IgG (H+L) at 1:5000. Lysates/proteins: 30ug per lane. Blocking buffer: 5% non-fat dry milk in TBST. Detection: ECL Enhanced Kit. Exposure time: 120s.

实验步骤

访问官网浏览详情: www.ablybio.cn