

LAMP2 Rabbit mAb

货号: **AYM29202**

产品信息

反应	Human,Mouse,Rat
宿主	Rabbit
克隆性	Monoclonal
预测反应	
应用	WB IHC IP
推荐浓度	WB: 1:500 - 1:2000 IHC: 1:50 - 1:200 IP: 1:20 - 1:50
理论分子量	120kDa
实测分子量	120kDa
形式	Liquid
保存条件	Store at -20°C. Avoid freeze / thaw cycles. Buffer: PBS with 0.75% BSA,50% glycerol,pH7.3.
偶联物	Unconjugated
阳性对照	A-549,Mouse liver,Mouse kidney,Rat liver,Rat kidney
细胞定位	Cell membrane,Endosome membrane,Lysosome membrane,Single-pass type I membrane protein
纯化	Affinity purification

抗原信息

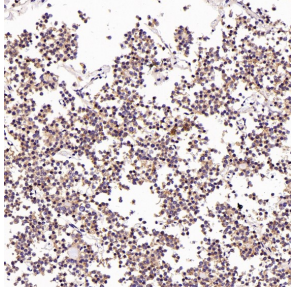
抗原信息	Recombinant fusion protein corresponding to Human LAMP2.
序列	FSIANNNLSYWDAPLGSSYMCNKEQTVSVSGAFQINTFDLRVQPFNVTQGKYSTAQDCSADDDNFLVPIAVGAALAGVLI LVLLAYFIGLKHHHAGYEQF

靶点信息

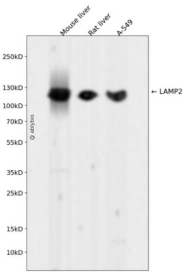
研究背景	The protein encoded by this gene is a member of a family of membrane glycoproteins. This glycoprotein provides selectins with carbohydrate ligands. It may play a role in tumor cell metastasis. It may also function in the protection, maintenance, and adhesion of the lysosome. Alternative splicing of this gene results in multiple transcript variants encoding distinct proteins. [provided by RefSeq, Jul 2008]
基因ID	3920

基因名	LAMP2
Swiss	P13473
别名	CD107b; LAMP-2; LAMPB; LGP-96; LGP110

产品验证



Immunohistochemical analysis of paraffin-embedded Human pituitary tumor, using the Antibody at 1:200 dilution.



Western blot analysis of LAMP2 expressed in Mouse liver, Rat liver, A-549 using LAMP2 Rabbit m Ab at 1:1000. Secondary antibody: HRP Goat Anti-Rabbit IgG (H+L) at 1:5000. Lysates/proteins : 30ug per lane. Blocking buffer: 5% non-fat dry milk in TBST. Detection: ECL Enhanced Kit. Exposure time: 120s.

实验步骤

访问官网浏览详情: www.ablybio.cn