

# ATF1 Rabbit mAb

货号: **AYM29201**

## 产品信息

|       |   |
|-------|---|
| 反应    | Human   |
| 宿主    | Rabbit  |
| 克隆性   | Monoclonal  |
| 预测反应  |   |
| 应用    | WB IF/ICC IP  |
| 推荐浓度  | <b>WB:</b> 1:500 - 1:2000<br><b>IF/ICC:</b> 1:50 - 1:200<br><b>IP:</b> 1:20 - 1:50            |
| 理论分子量 | 15kDa/29kDa   |
| 实测分子量 | 36kDa   |
| 形式    | Liquid  |
| 保存条件  | Store at -20°C. Avoid freeze / thaw cycles.<br>Buffer: PBS with 0.75% BSA,50% glycerol,pH7.3. |
| 偶联物   | Unconjugated  |
| 阳性对照  | HL-60,MCF7,HeLa,Mouse spleen,Mouse ovary,Mouse liver  |
| 细胞定位  | Nucleus   |
| 纯化    | Affinity purification   |

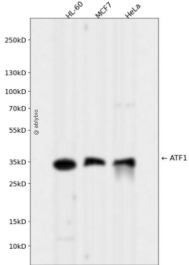
## 抗原信息

|      |  |
|------|--|
| 抗原信息 | Recombinant fusion protein corresponding to Human ATF1.  |
| 序列   | MEDSHKSTTSETAPQPGSAVQGAHISHIAQQVSSLSESEESQDSSDSIGSSQKAHGILARRPSYRKILKDLSSDTRGRKG<br>DGENSGVSAAVTSMVPTPIYQTSSGQYIAIAPNGALQLASPGTDGVQGLQTLTMTNSGSTQQGTTILQYAQTS DGQQL<br>VPSNQVVVQTASGDMQTYQIRTTPSATSLPQTVVMTSPVTLTSQTTKTD |

## 靶点信息

|       |   |
|-------|---|
| 研究背景  | This gene encodes an activating transcription factor, which belongs to the ATF subfamily and bZIP (basic-region leucine zipper) family. It influences cellular physiologic processes by regulating the expression of downstream target genes, which are related to growth, survival, and other cellular activities. This protein is phosphorylated at serine 63 in its kinase-inducible domain by serine/threonine kinases, cAMP-dependent protein kinase A, calmodulin-dependent protein kinase I/II, mitogen- and stress-activated protein kinase and cyclin-dependent kinase 3 (cdk-3). Its phosphorylation enhances its transactivation and transcriptional activities, and enhances cell transformation. Fusion of this gene and FUS on chromosome 16 or EWSR1 on chromosome 22 induced by translocation generates chimeric proteins in angiomatoid fibrous histiocytoma and clear cell sarcoma. This gene has a pseudogene on chromosome 6. |
| 基因ID  | 466   |
| 基因名   | ATF1  |
| Swiss | P18846  |
| 别名    | ATF1;EWS-ATF1;FUS/ATF-1;TREB36  |

## 产品验证



Western blot analysis of ATF1 expressed in HL-60, MCF7, HeLa using ATF1 Rabbit mAb at 1:1000. Secondary antibody: HRP Goat Anti-Rabbit IgG (H+L) at 1:5000. Lysates/proteins: 30ug per lane. Blocking buffer: 5% non-fat dry milk in TBST. Detection: ECL Enhanced Kit. Exposure time: 120s.

## 实验步骤

访问官网浏览详情: [www.ablybio.cn](http://www.ablybio.cn)