

LMAN1 Rabbit mAb

货号: **AYM29196**

产品信息

反应	Human,Mouse,Rat
宿主	Rabbit
克隆性	Monoclonal
预测反应	
应用	WB IHC IF/ICC
推荐浓度	WB: 1:500 - 1:2000 IHC: 1:50 - 1:200 IF/ICC: 1:50 - 1:200
理论分子量	57kDa
实测分子量	55kDa
形式	Liquid
保存条件	Store at -20°C. Avoid freeze / thaw cycles. Buffer: PBS with 0.75% BSA,50% glycerol,pH7.3.
偶联物	Unconjugated
阳性对照	BT-474,LO2,U-251MG
细胞定位	Endoplasmic reticulum membrane,Endoplasmic reticulum-Golgi intermediate compartment membrane,Golgi apparatus membrane,Single-pass membrane protein,Single-pass type I membrane protein
纯化	Affinity purification

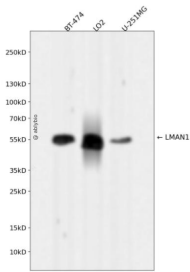
抗原信息

抗原信息	Recombinant fusion protein corresponding to Human LMAN1.
序列	PGKEPPTPDKEISEKEKEYQEEFEHFQQLDQKKEEFQKGHDPDLQGGQPAEEIFESVGDRELQVFEQGQNRHLEIKQLNRQLDMILDEQRRYVSSLTEEISKRGAGMPGQHGQITQQELDTVVKTQHEILRQVNMKNSMSETVRLVSGMQHPGSAGGVYETTQHFIDIKEHLHIVKRDIDNLVQRNMPANEKPKCELPFPFSLSTVH

靶点信息

研究背景	The protein encoded by this gene is a membrane mannose-specific lectin that cycles between the endoplasmic reticulum, endoplasmic reticulum-Golgi intermediate compartment, and cis-Golgi, functioning as a cargo receptor for glycoprotein transport. The protein has an N-terminal signal sequence, a calcium-dependent and pH-sensitive carbohydrate recognition domain, a stalk region that functions in oligomerization, a transmembrane domain, and a short cytoplasmic domain required for organelle targeting. Allelic variants of this gene are associated with the autosomal recessive disorder combined factor V-factor VIII deficiency.
基因ID	3998
基因名	LMAN1
Swiss	P49257
别名	LMAN1;ERGIC-53;ERGIC53;F5F8D;FMFD1;MCFD1;MR60;gp58

产品验证



Western blot analysis of LMAN1 expressed in BT-474, LO2, U-251MG using LMAN1 Rabbit mAb at 1:1000. Secondary antibody: HRP Goat Anti-Rabbit IgG (H+L) at 1:5000. Lysates/proteins: 30ug per lane. Blocking buffer: 5% non-fat dry milk in TBST. Detection: ECL Enhanced Kit. Exposure time: 120s.

实验步骤

访问官网浏览详情: www.ablybio.cn